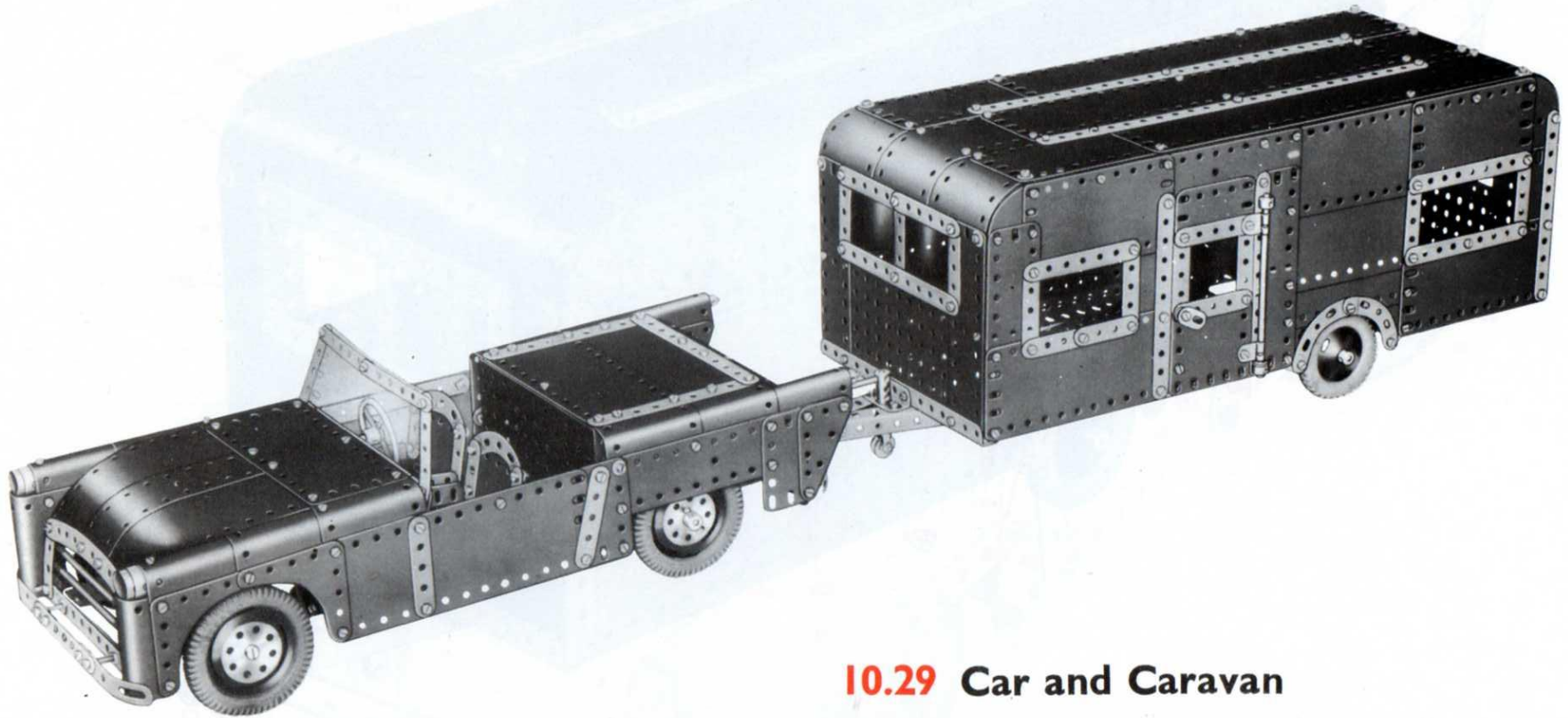


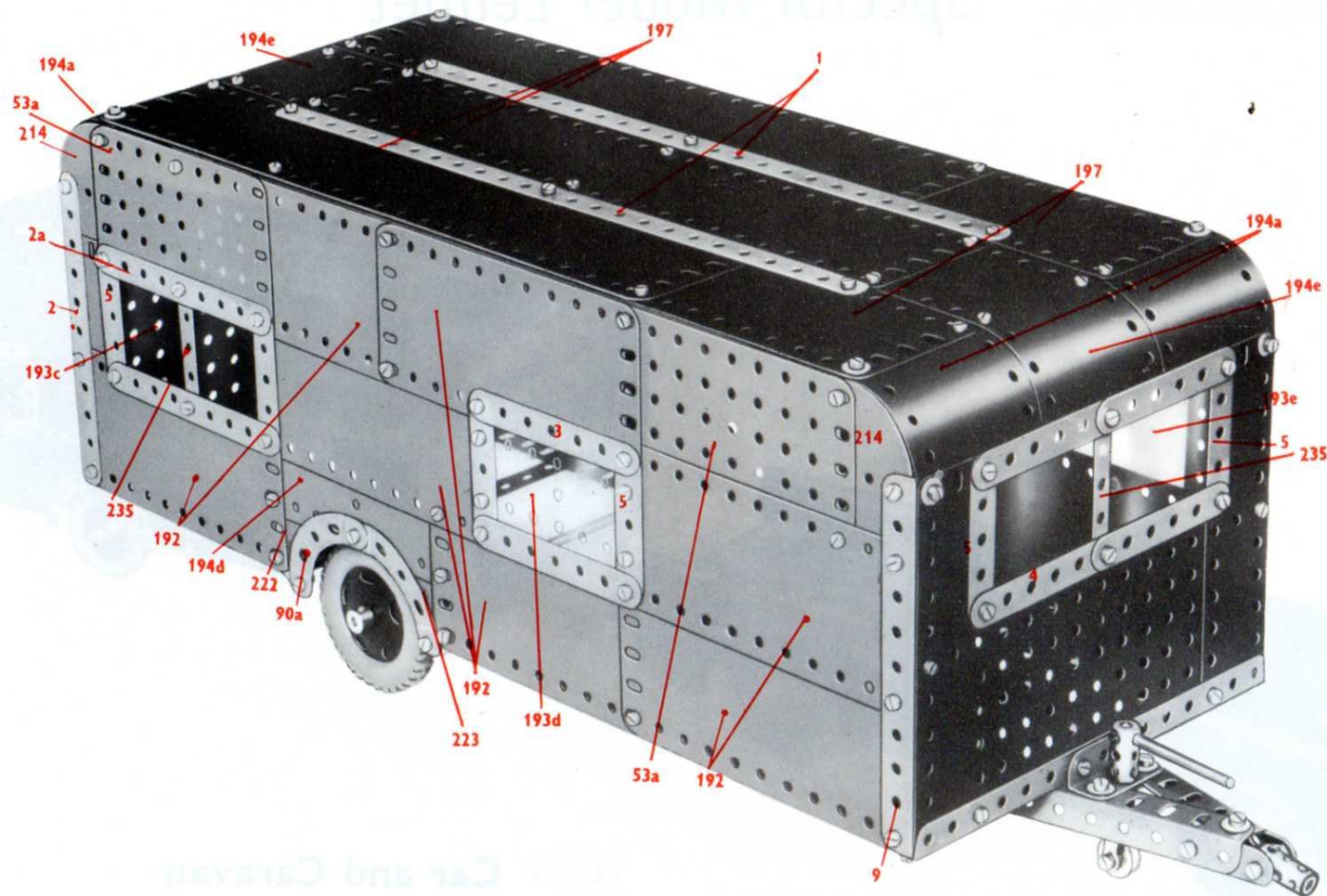
MECCANO®*Special Model Leaflet*

Leaflet No. 29

**10.29 Car and Caravan**

This Meccano model of a Sports Car and Caravan is driven by a Meccano No. 1 Clockwork Motor. The Motor is mounted at the rear of the car and drives through a contrate wheel and pinion reduction gearing on to the rear wheels of the car. Steering is effected through a system of gears and levers controlled from the steering wheel. There is also a reversing control, which is located conveniently in the dash board, and a glazed wind-screen.

The Caravan, which incorporates glazed windows and an opening door, is attached to the car by means of a towing bar and swivelling linkage gear. A small third pilot wheel on a swivel mounting is built into the chassis of the caravan so that when detached from the towing vehicle, the caravan can be manœuvred by hand.



How to use this leaflet

The constructional details of the model shown in this Leaflet are explained entirely by means of half-tone illustrations and line drawings. Once the knack of 'reading' the drawings has been acquired assembly of the model will be found quite straightforward and simple to carry out.

Before starting to build the model it is advisable to study all the illustrations carefully so as to get a good idea of its various sections. Points at which various units of the model are bolted together to form the complete structure are indicated in the drawings by RED DOTS or RED BOLTHEADS whenever possible.

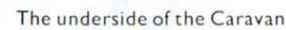
The particular parts used in the assembly of the model can in most cases

be identified simply by looking at the illustrations, but where the identity of a part may not be quite clear, its Part Number is printed on the model illustrations in RED. RED DOTTED pointer lines are used to indicate parts that are hidden behind other parts of the structure.

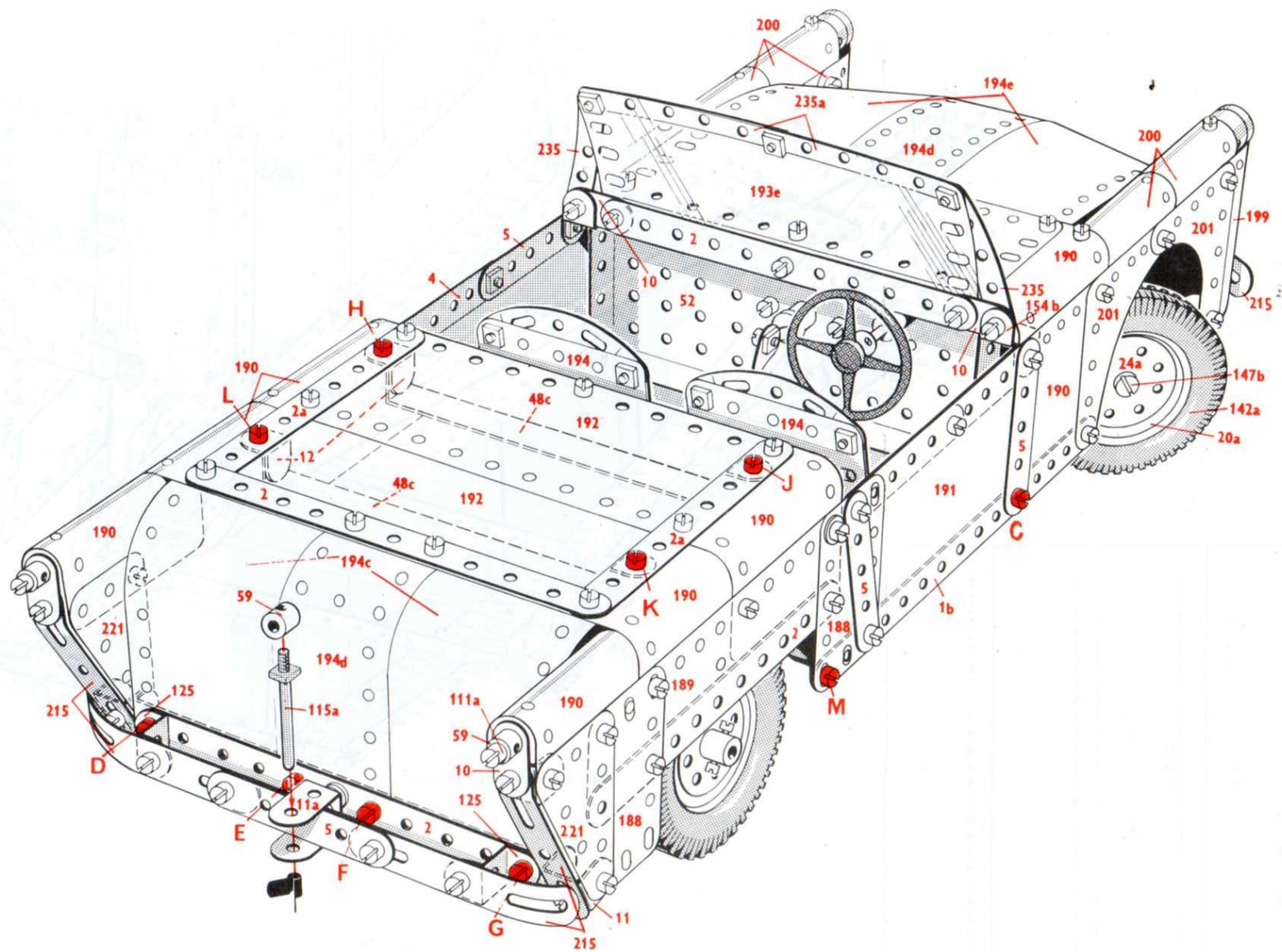
As a further help a list of the parts required to build the model is given in this Leaflet. In this list the catalogue numbers of the parts are printed in RED and the quantity of each part in BLACK.

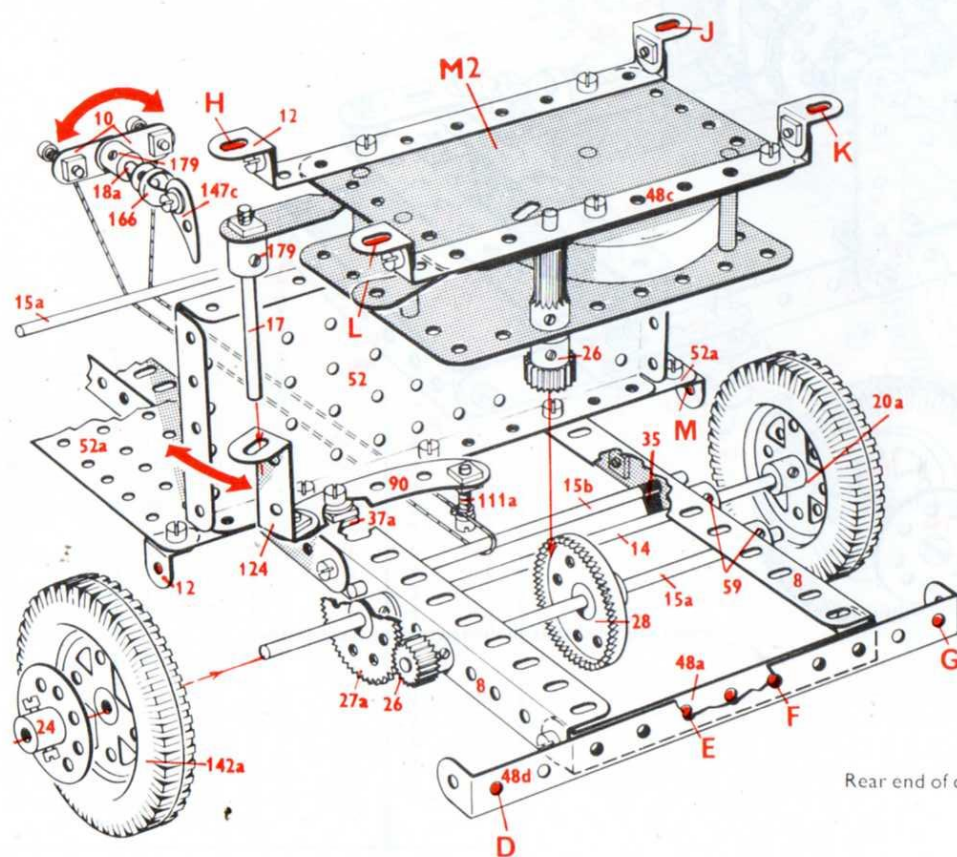
In models fitted with a driving Motor the particular type of Motor is indicated by one of the following Code Marks: M1 = Magic Clockwork Motor; M2 = No. 1 Clockwork Motor; M3 = Meccano Electric Motor.

5

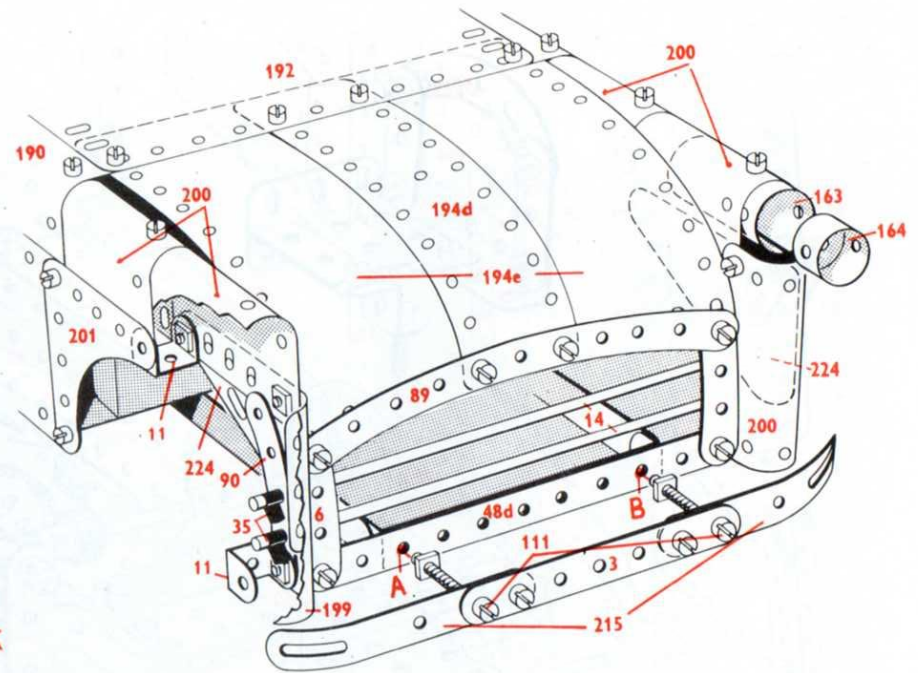


- Not included in set

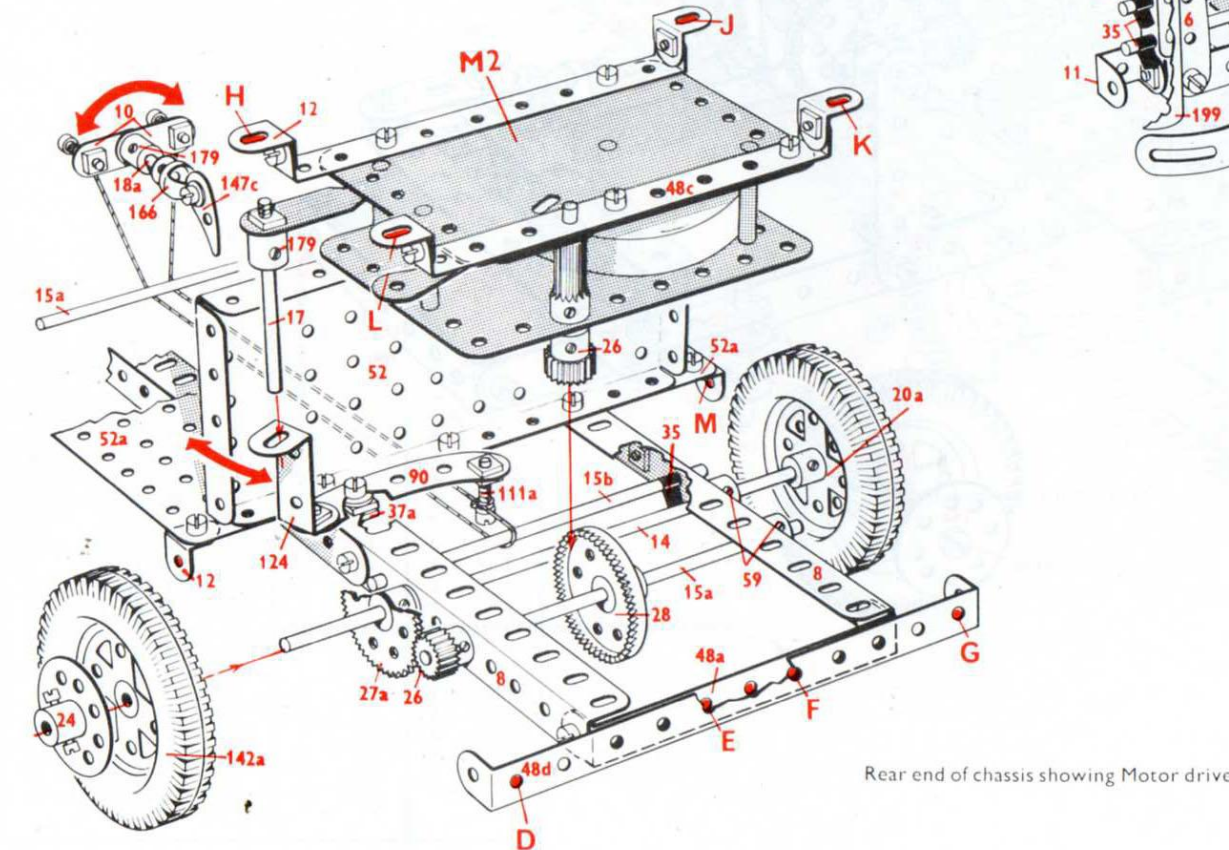
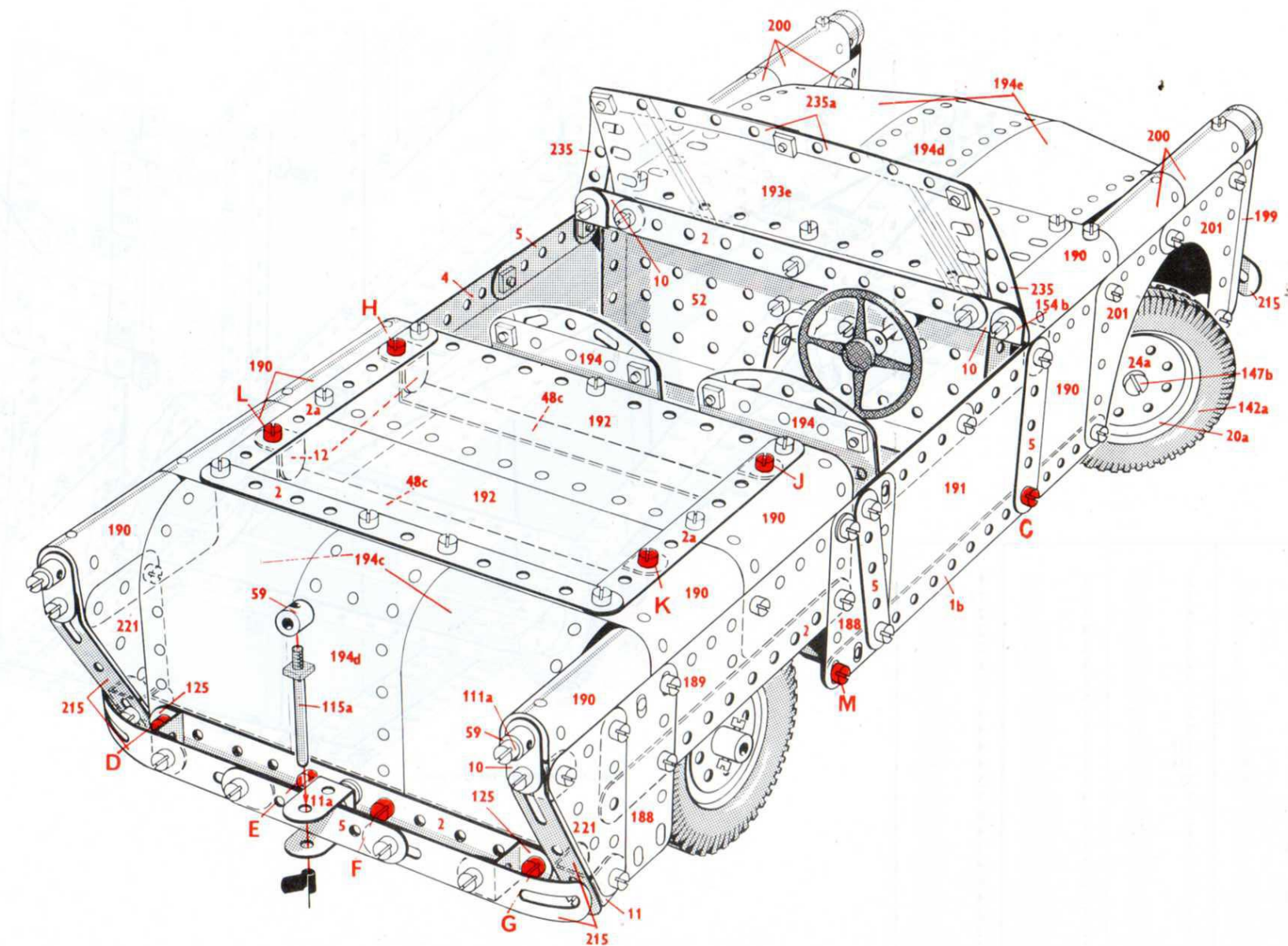




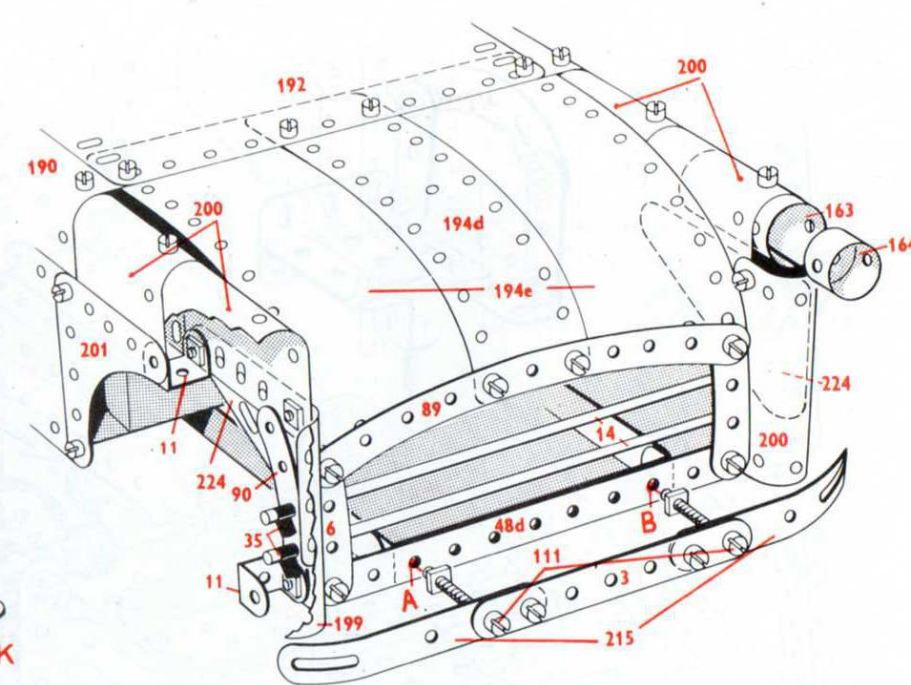
Rear end of chassis showing Motor drive



Details of the bonnet and radiator assembly



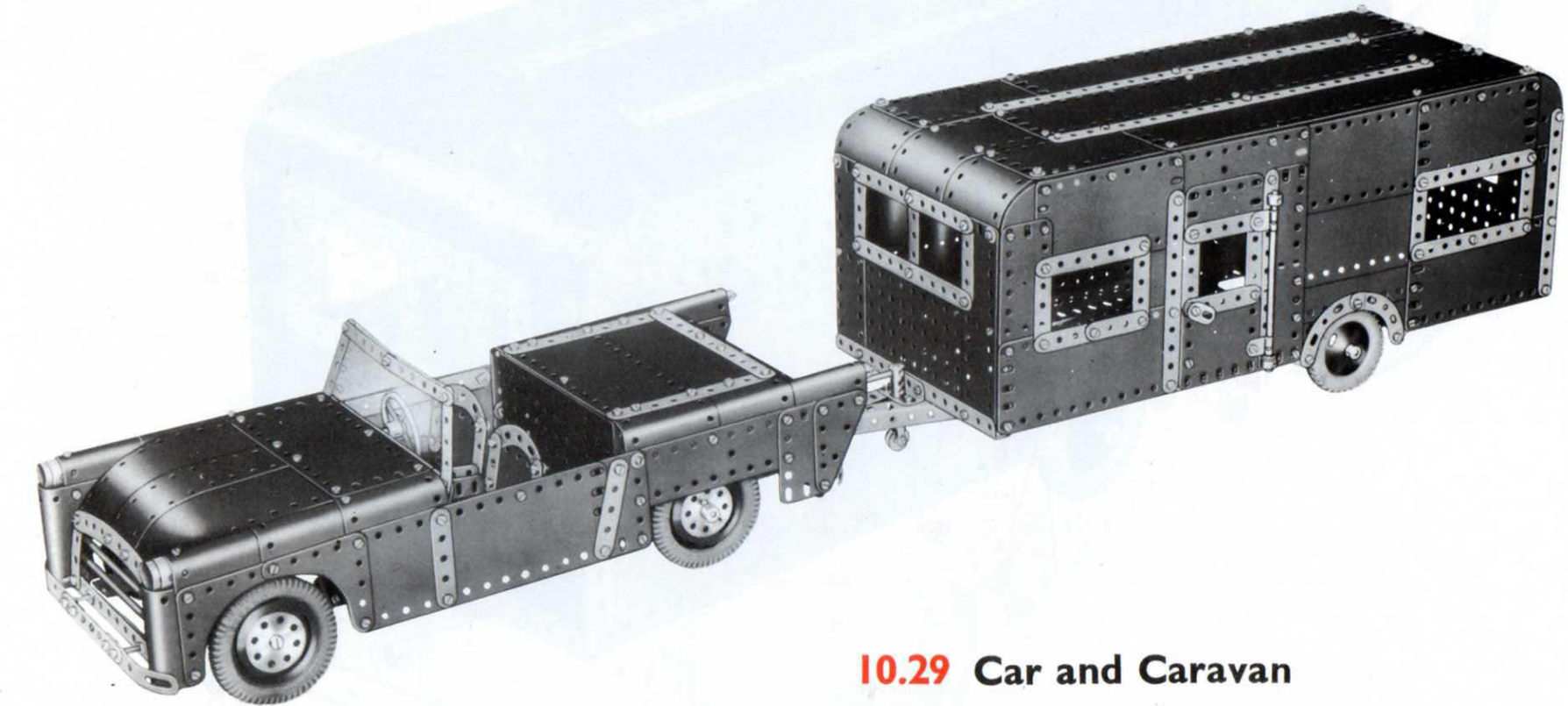
Rear end of chassis showing Motor drive



Details of the bonnet and radiator assembly

MECCANO. Special Model Leaflet

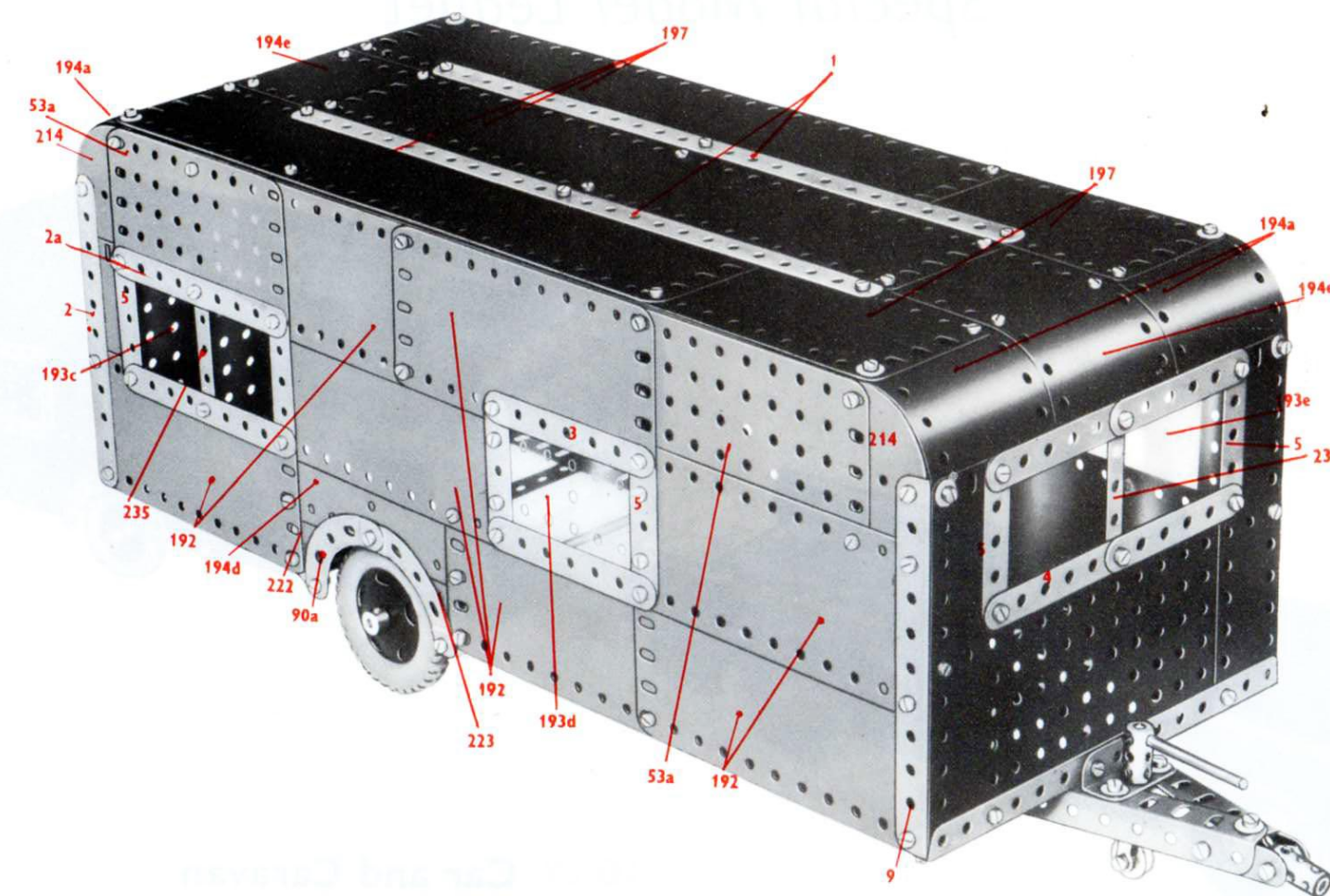
Leaflet No. 29



10.29 Car and Caravan

This Meccano model of a Sports Car and Caravan is driven by a Meccano No. 1 Clockwork Motor. The Motor is mounted at the rear of the car and drives through a contra wheel and pinion reduction gearing on to the rear wheels of the car. Steering is effected through a system of gears and levers controlled from the steering wheel. There is also a reversing control, which is located conveniently in the dash board, and a glazed wind-screen.

The Caravan, which incorporates glazed windows and an opening door, is attached to the car by means of a towing bar and swivelling linkage gear. A small third pilot wheel on a swivel mounting is built into the chassis of the caravan so that when detached from the towing vehicle, the caravan can be manoeuvred by hand.



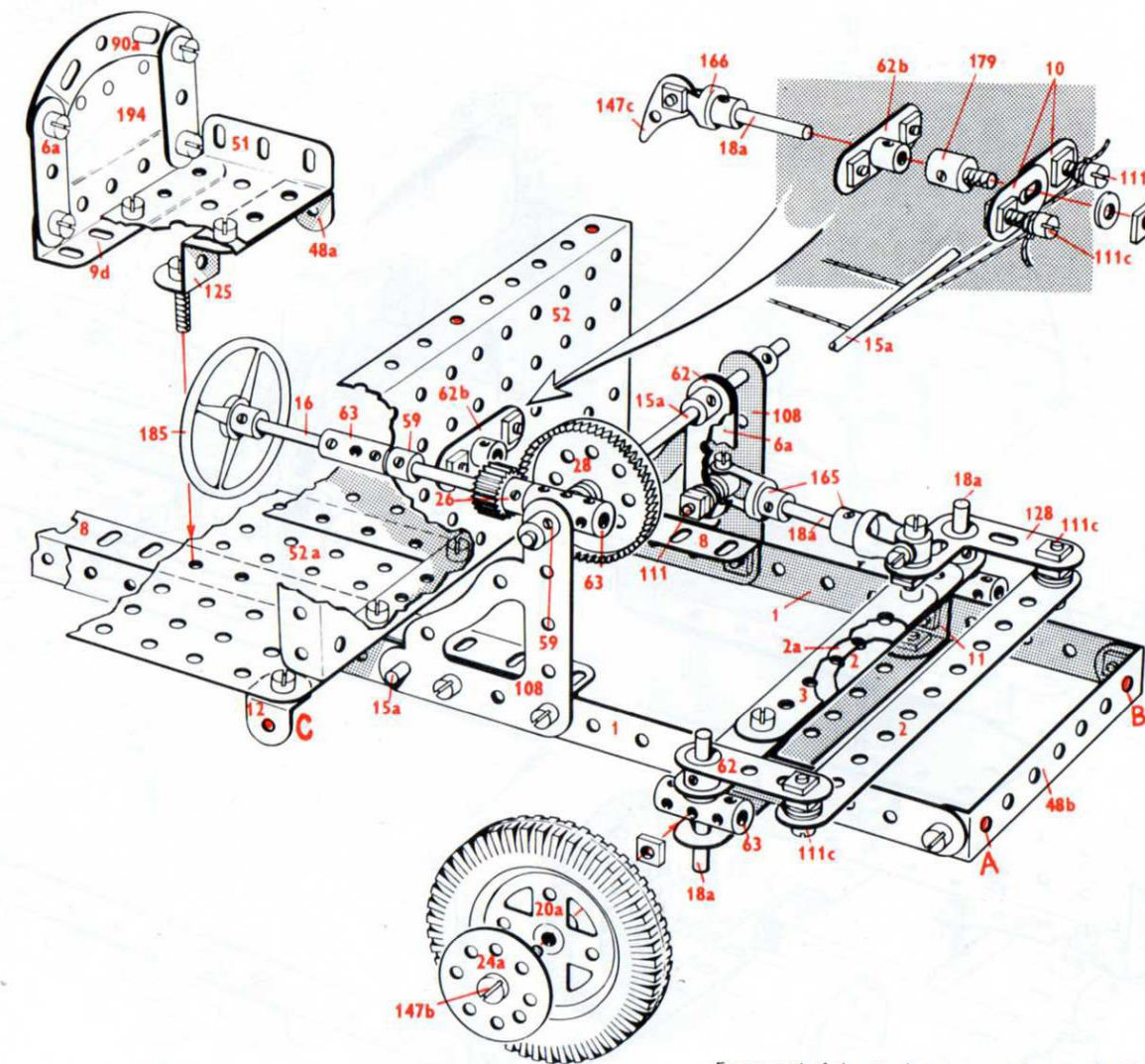
How to use this leaflet

The constructional details of the model shown in this Leaflet are explained entirely by means of half-tone illustrations and line drawings. Once the knack of 'reading' the drawings has been acquired assembly of the model will be found quite straightforward and simple to carry out. Before starting to build the model it is advisable to study all the illustrations carefully so as to get a good idea of its various sections. Points at which various units of the model are bolted together to form the complete structure are indicated in the drawings by RED DOTS or RED BOLTHEADS whenever possible. The particular parts used in the assembly of the model can in most cases

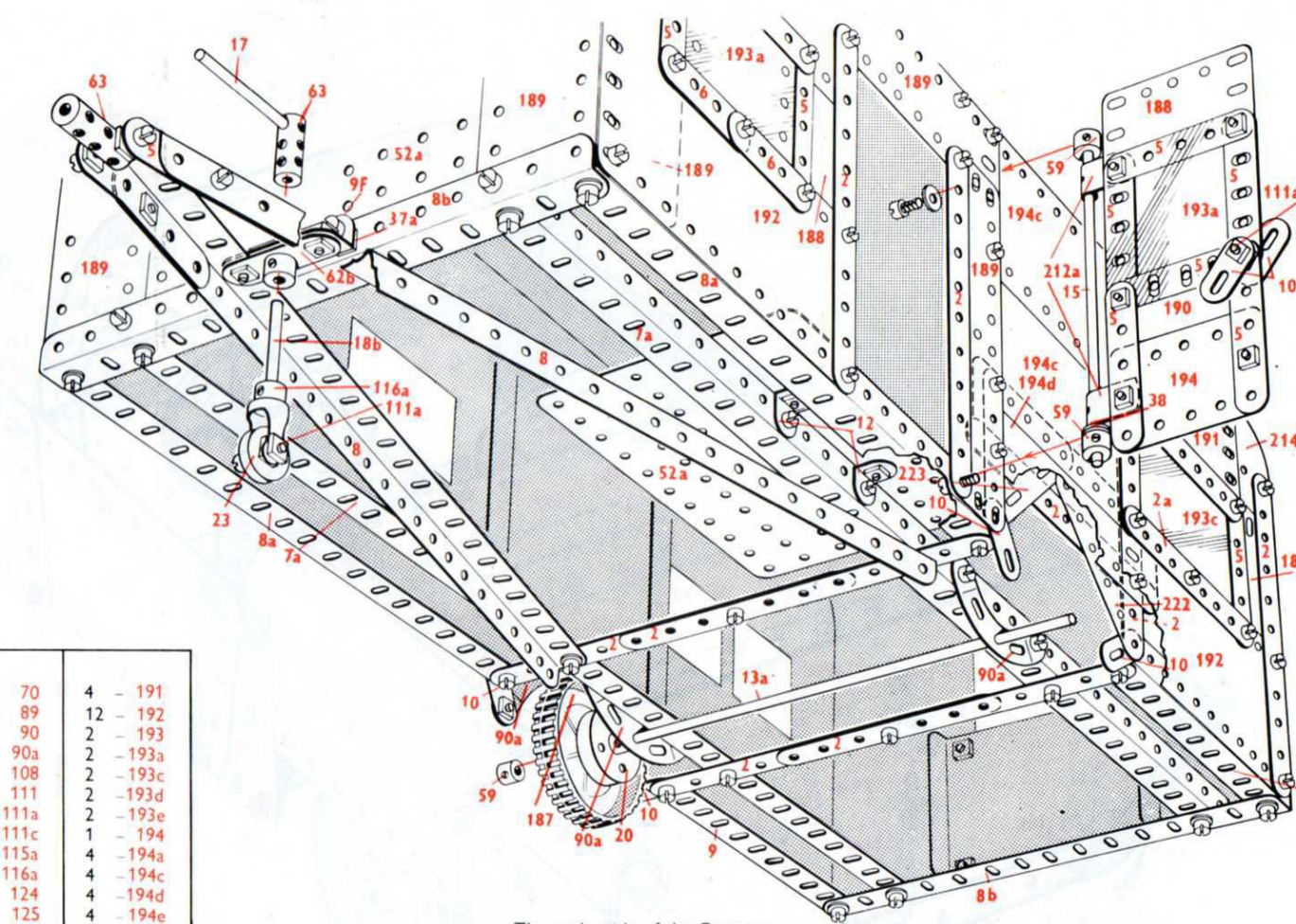
be identified simply by looking at the illustrations, but where the identity of a part may not be quite clear, its Part Number is printed on the model illustrations in RED. RED DOTTED pointer lines are used to indicate parts that are hidden behind other parts of the structure.

As a further help a list of the parts required to build the model is given in this Leaflet. In this list the catalogue numbers of the parts are printed in RED and the quantity of each part in BLACK.

In models fitted with a driving Motor the particular type of Motor is indicated by one of the following Code Marks: M1= Magic Clockwork Motor; M2= No. 1 Clockwork Motor; M3= Meccano Electric Motor.



Front end of chassis showing steering mechanism



The underside of the Caravan

4	-	1b	2	-	18b	2	-	70	4	-	191
		1	2	-	20	1	-	89	12	-	192
23	-	2	4	-	20a	3	-	90	2	-	193
6	-	2a	1	-	23	8	-	90a	2	-	193a
5	-	3	2	-	24	2	-	108	2	-	193c
8	-	4	2	-	24a	3	-	111	2	-	193d
27	-	5	3	-	26	2	-	111a	2	-	193e
2	-	6	1	-	27a	5	-	111c	1	-	194
5	-	6a	2	-	28	1	-	115a	4	-	194a
2	-	7a	9	-	35	1	-	116a	4	-	194c
6	-	8	337	-	37a	1	-	124	4	-	194d
2	-	8a	314	-	37b	2	-	125	4	-	194e
2	-	8b	35	-	38	1	-	128	5	-	196
2	-	9	1	-	40	4	-	142a	1	-	199
2	-	9d	2	-	48a	2	-	147b	6	-	200
2	-	9f	2	-	48b	1	-	147c	4	-	201
16	-	10	2	-	48c	1	-	154a	2	-	212a
8	-	11	2	-	48d	1	-	154b	4	-	214
1	-	11a	2	-	51	2	-	163	6	-	215
18	-	12	2	-	52	2	-	164	4	-	221
1	-	13a	4	-	52a	1	-	166	2	-	222
3	-	14	3	-	53	2	-	179	2	-	223
1	-	15	2	-	53a	1	-	185	2	-	224
2	-	15a	12	-	59	2	-	187	6	-	235
2	-	15b	2	-	62	8	-	188	2	-	235a
3	-	17	2	-	62b	8	-	189			
4	-	18a	6	-	63	10	-	190			

- Not included in se