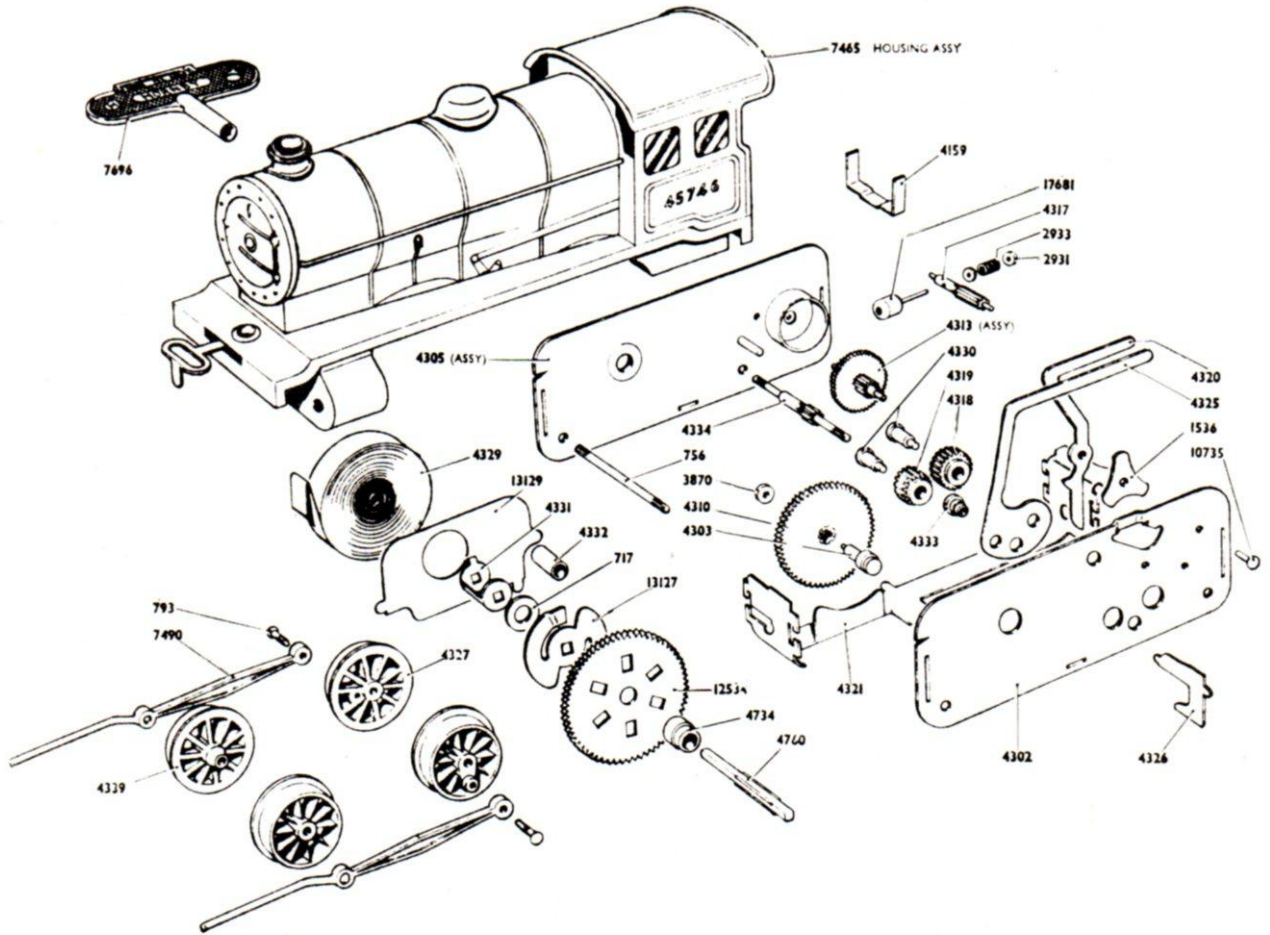


No. 30 CLOCKWORK LOCOMOTIVE



- 717 Washer
- 4331 Catch
- 4332 Bush
- 4734 Distance Bush
- 4760 Winding Shaft
- 12534 No. 1 Gear
- 13127 Ratchet
- 756 Axle
- 793 Pin
- 1536 Spring Washer
- 3870 Washer
- 4302 Sideplate (L.H.)
- 4303 Stud
- 4310 No. 2 Gear & Pinion Assembly
- 4318 No. 4 Gear
- 4319 Reversing Pinion
- 4320 Brake Lever
- 4325 Reversing Lever
- 4330 Stud
- 4333 Bush
- 10735 Rivet

No. 1 Gear
Assembly
Job No. 4307

Sideplate
& Gear
Assembly
Job No.
4300

- 2931 Washer
- 2933 Spring
- 4317 Governor Pinion
- 17681 Governor Pin & Weight
Assembly
- 4159 Clip
- 4305 Sideplate Assembly (R.H.)
- 4313 No. 3 Gear & Pinion Assembly
- 4321 Support for Sideplate
- 4326 Brake Catch
- 4327 Driving Wheel
- 4329 Mainspring
- 4334 Driving Shaft & Pinion
- 4339 Bogie Wheel
- 7490 Piston & Coupling Rod
- 7696 Winding Key "H" Key—Sales No. 43902
- 13129 Mainspring Guide

Governor
Assembly
Job No.
4316

ASSEMBLIES

- 4299 No. 30 Motor—Complete
- 7465 Housing Assembly