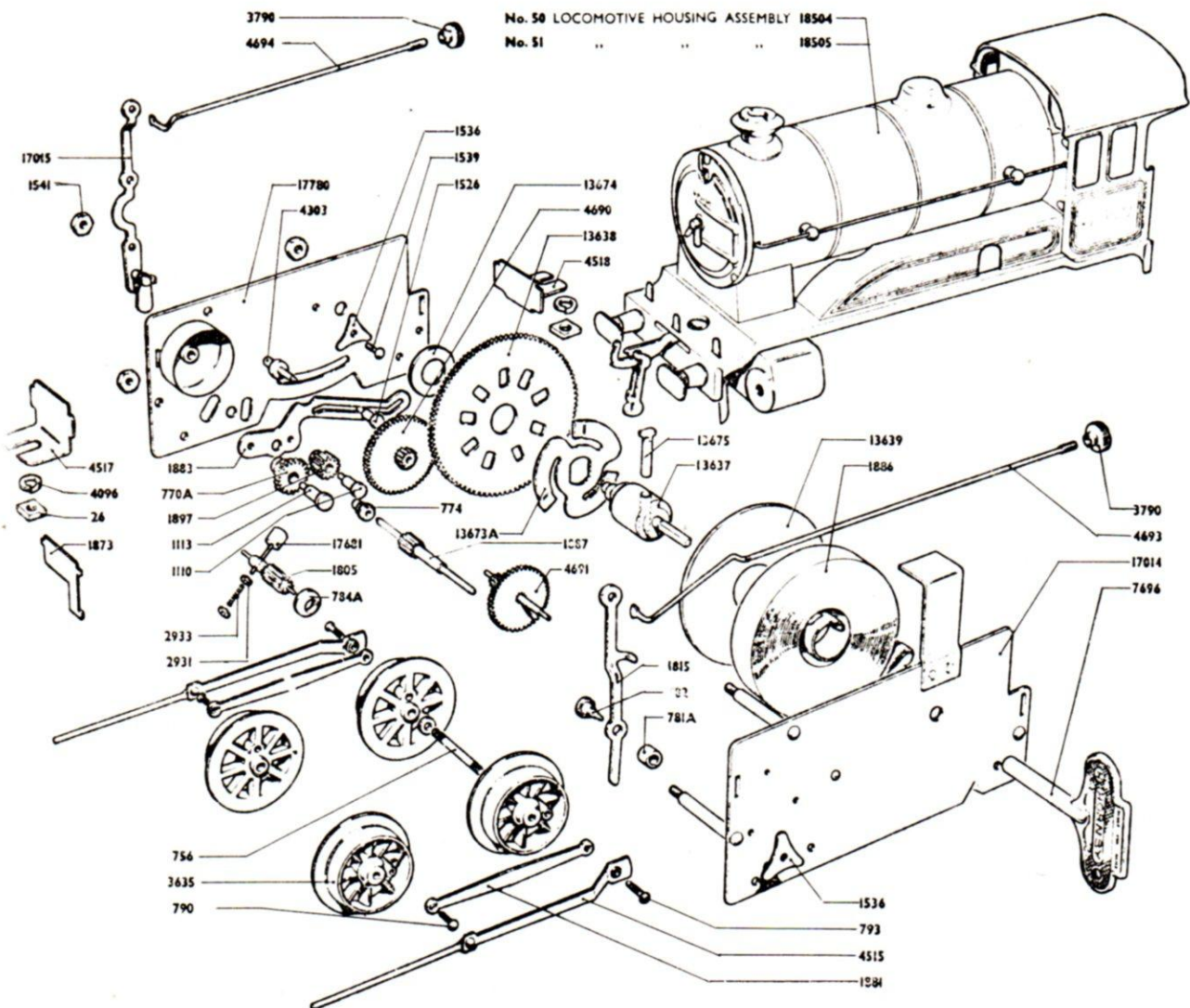


No. 50 CLOCKWORK LOCOMOTIVE



- 26 Nut
- 756 Axle
- 770A No. 4 Gear Wheel
- 774 Bush
- 1110 Bearing (For Reversing Pinion)
- 1113 Bearing (For No. 4 Gear Wheel)
- 1526 Stud
- 1536 Spring Washer
- 1539 Stud
- 1883 Reversing Lever
- 1897 Reversing Pinion
- 4303 Stud for No. 2 Gear
- 17015 Control Lever Assembly
- 17780 R.H. Sideplate Sub-Assembly
- 781A Brake Lever Collar
- 782 Stud
- 1536 Spring Washer
- 1815 Brake Lever
- 17014 L.H. Sideplate Sub-Assembly
- 784A Brake Disc
- 1805 Governor Pinion
- 2931 Washer
- 2933 Spring
- 17681 Pin & Weight Assembly
- 790 Pin (Coupling Rod)
- 793 Pin (Connecting Rod)

R.H. Sideplate Assembly
Job No. 4676

L.H. Sideplate Assembly
Job No. 4675

Governor Assembly
Job No. 4692

- 1541 Nut
- 1873 Brake Controller
- 1881 Coupling Rod
- 1886 Mainspring
- 1887 Driving Shaft
- 3635 Wheel
- 3790 Nut
- 4096 Spring Washer
- 4515 Piston & Connecting Rod Assembly
- 4517 Front Fixing Bracket
- 4518 Rear Fixing Bracket
- 4690 No. 2 Gear & Pinion Assembly
- 4691 No. 3 Gear & Pinion Assembly
- 4693 Brake Lever Rod
- 4694 Reversing Lever Rod
- 7696 Winding Key "H" Key—Sales No. 43902
- 13637 Winding Shaft
- 13638 No. 1 Gear
- 13673A Ratchet
- 13674 Washer
- 13675 Mainspring Pin
- 13639 Mainspring Guard

No. 1 Gear Assembly
Job No. 13636

ASSEMBLIES

- 4519 No. 50 Motor—Complete
- 18504 Housing Assembly—No. 50 Locomotive
- 18505 Housing Assembly—No. 51 Locomotive