

# MECCANO®

## Special Model Leaflet

Leaflet No. 27

### 10.27 Robot Man

This Meccano model of a Robot or Mechanical Man stands over 3 ft. high. It is powered by a Meccano E15R Electric Motor, which by an ingenious series of linkages, causes the Robot to walk slowly along, swinging his arms and turning his head from side to side.

From a mechanical point of view the model is of particular interest in that it provides an excellent illustration of how a single power source can be harnessed by means of gear and chain drives and the use of cranks and levers, to operate no less than five separate but synchronized reciprocal motions.

#### How to use this leaflet

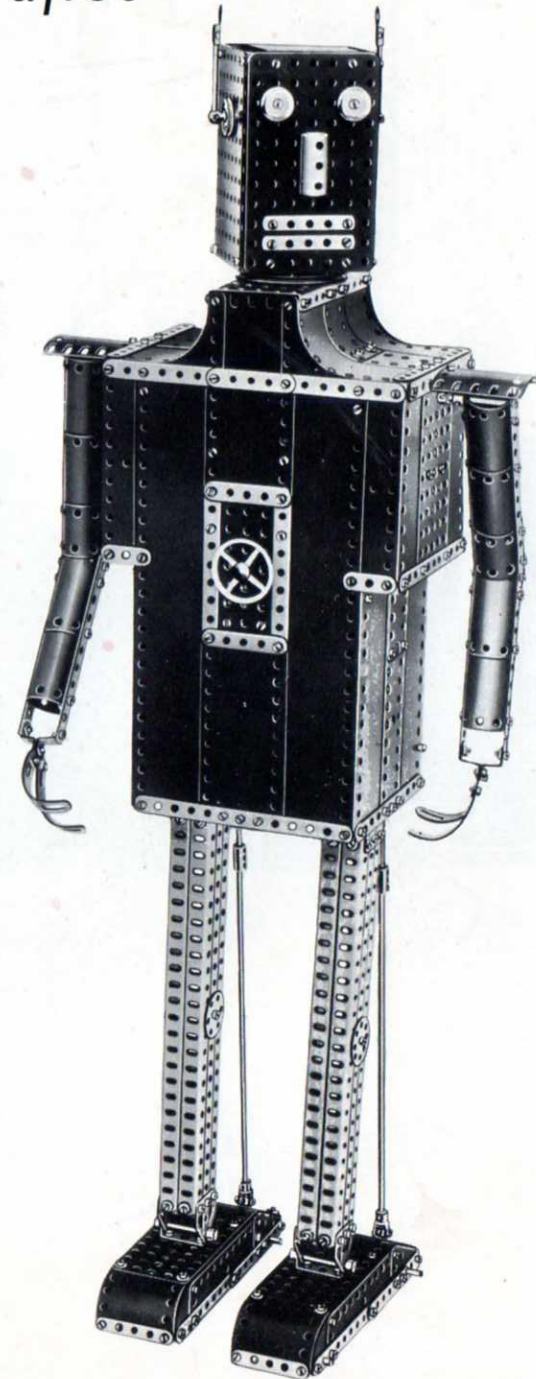
The constructional details of the model shown in this Leaflet are explained entirely by means of half-tone illustrations and line drawings. Once the knack of 'reading' the drawings has been acquired assembly of the model will be found quite straightforward and simple to carry out.

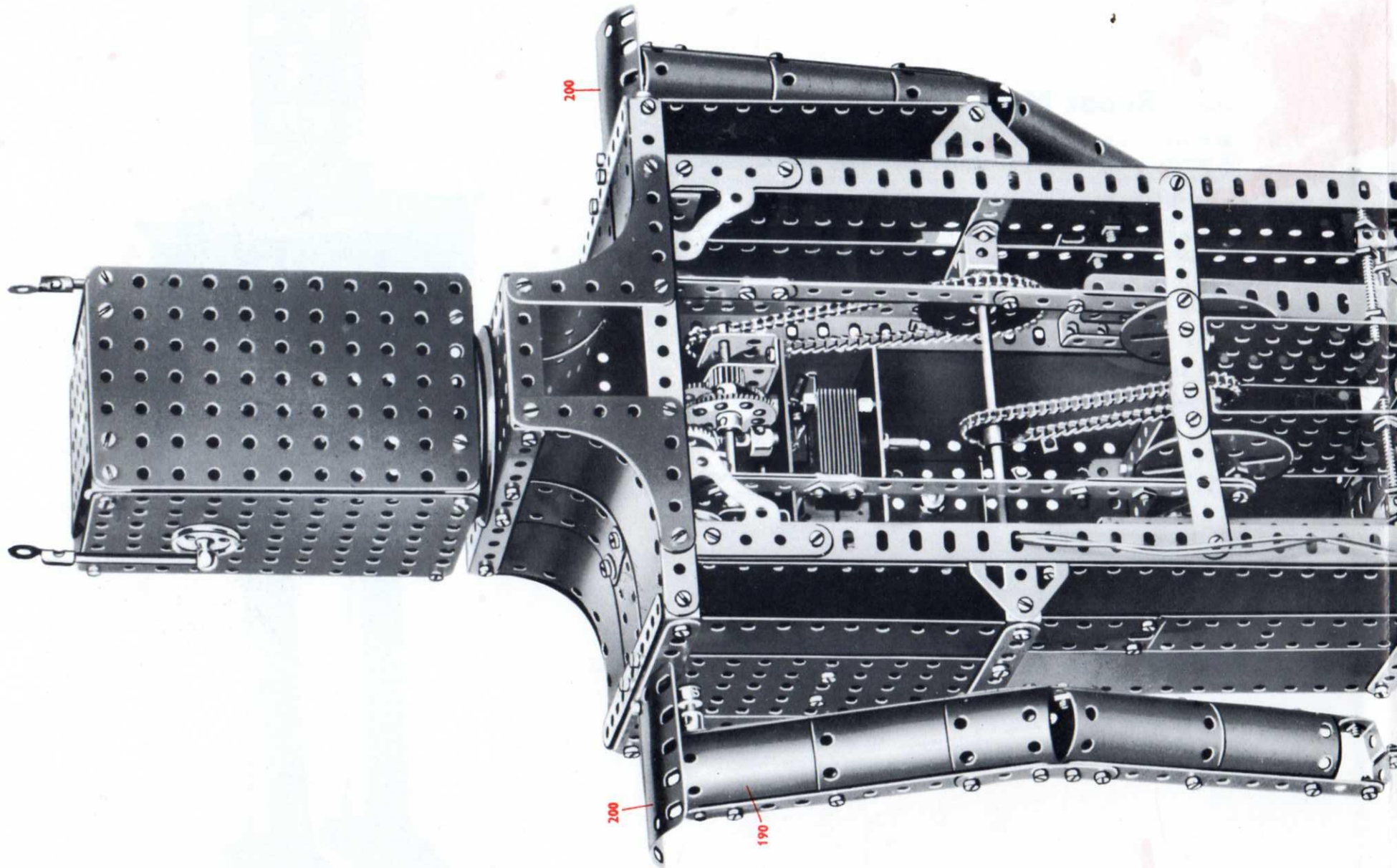
Before starting to build the model it is advisable to study all the illustrations carefully so as to get a good idea of its various sections. Points at which various units of the model are bolted together to form the complete structure are indicated in the drawings by RED DOTS or RED BOLT HEADS whenever possible.

The particular parts used in the assembly of the model can in most cases be identified simply by looking at the illustrations, but where the identity of a part may not be quite clear, its Part Number is printed on the model illustrations in RED. RED DOTTED pointer lines are used to indicate parts that are hidden behind other parts of the structure.

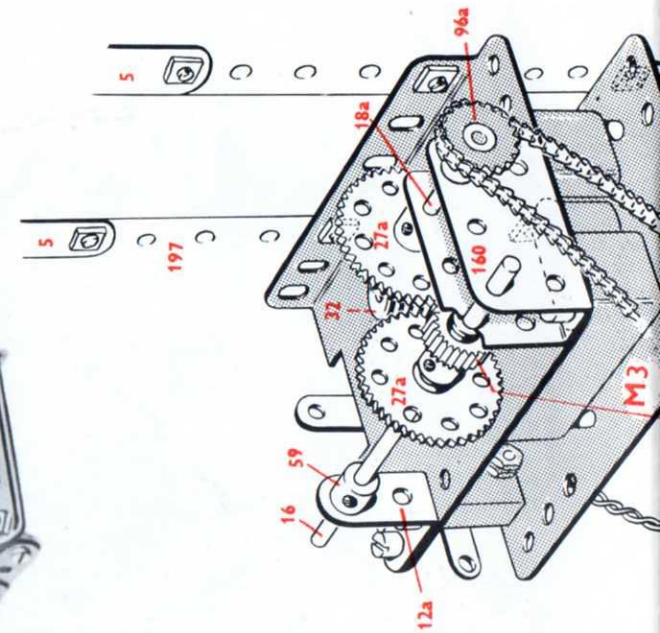
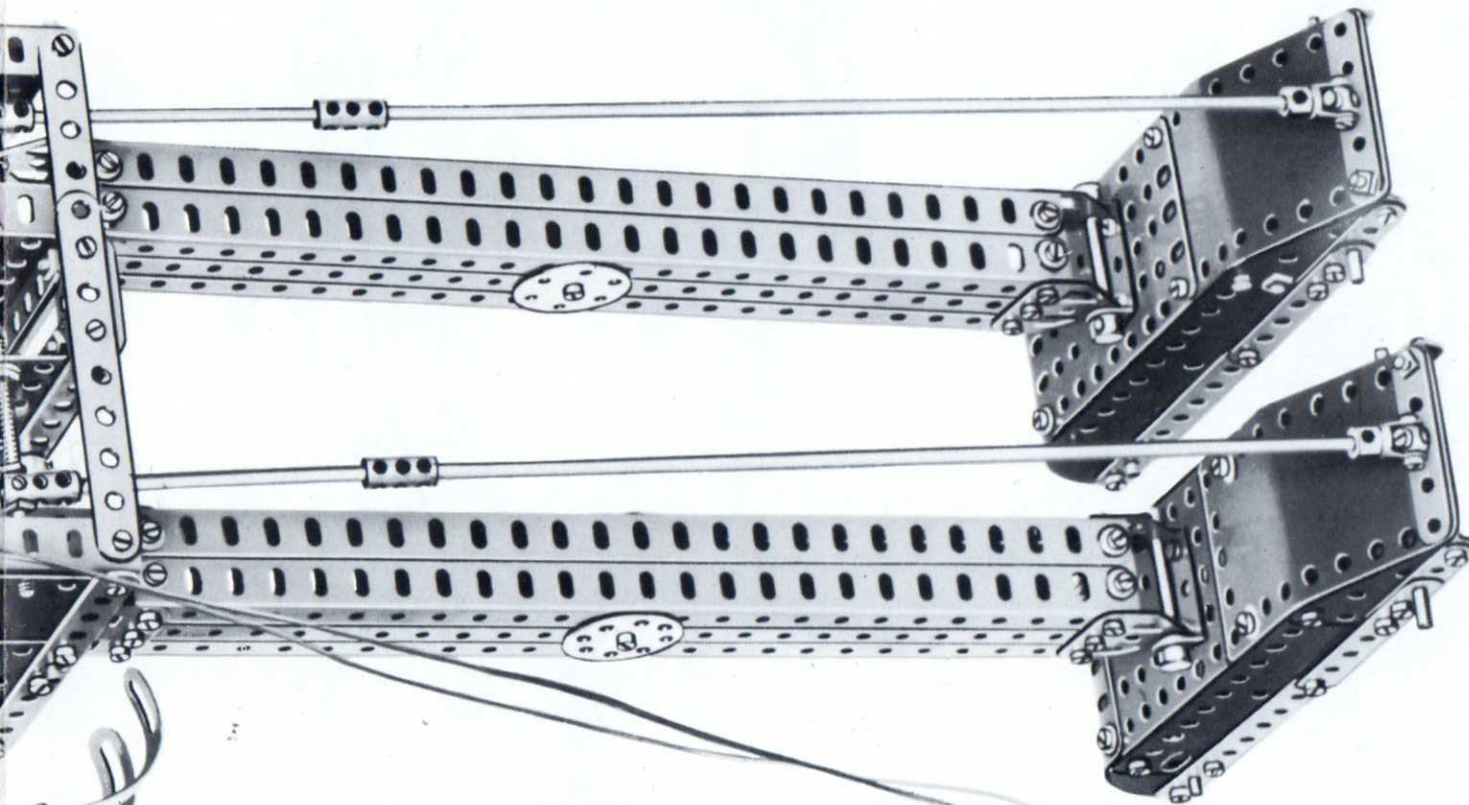
As a further help a list of the parts required to build the model is given in this Leaflet. In this list the catalogue numbers of the parts are printed in RED and the quantity of each part in BLACK.

In models fitted with a driving Motor the particular type of Motor is indicated by one of the following Code Marks: M1 = Magic Clockwork Motor; M2 = No. 1 Clockwork Motor; M3 = Meccano Electric Motor.



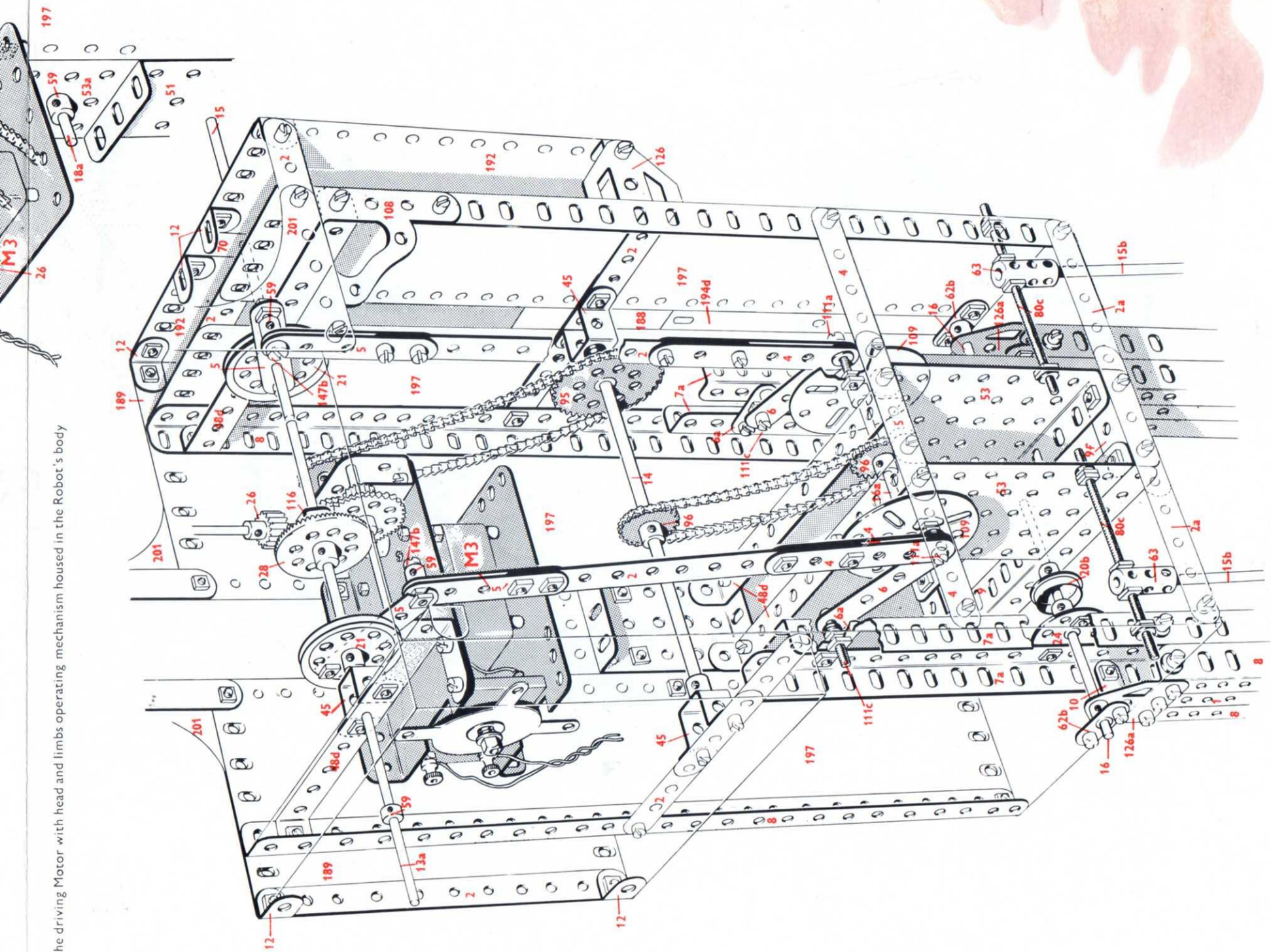




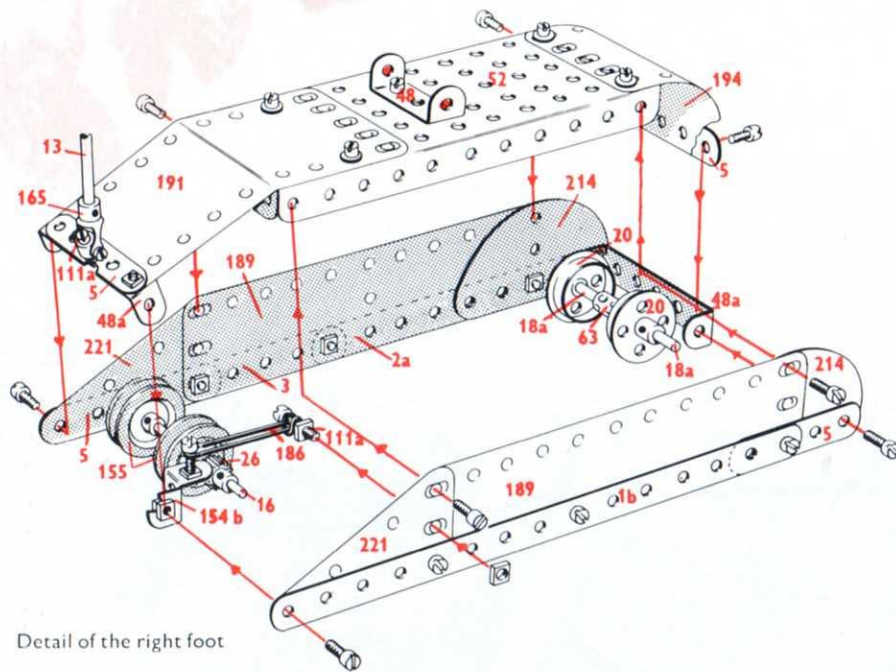




The driving Motor with head and limbs operating mechanism housed in the Robot's body



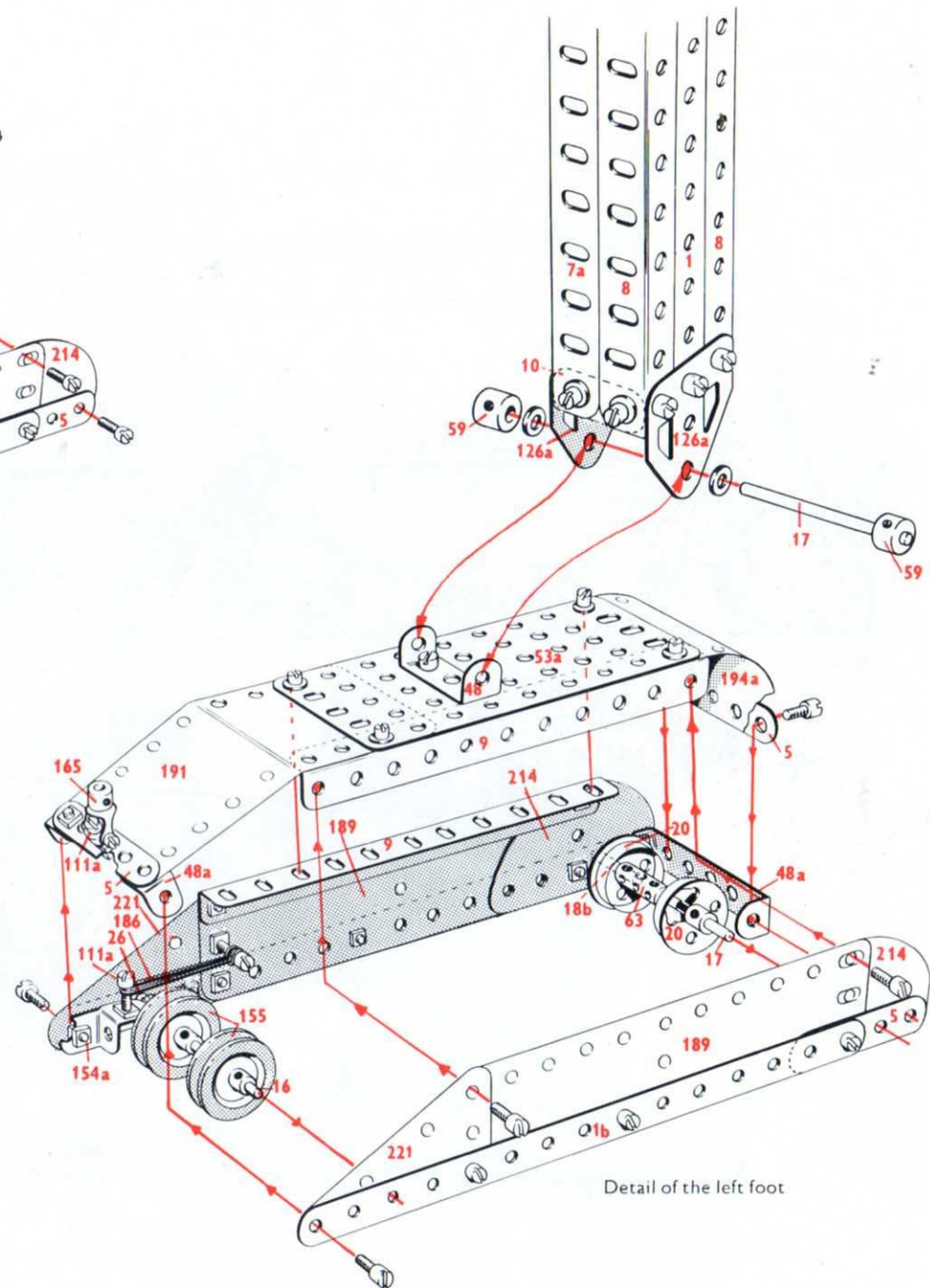




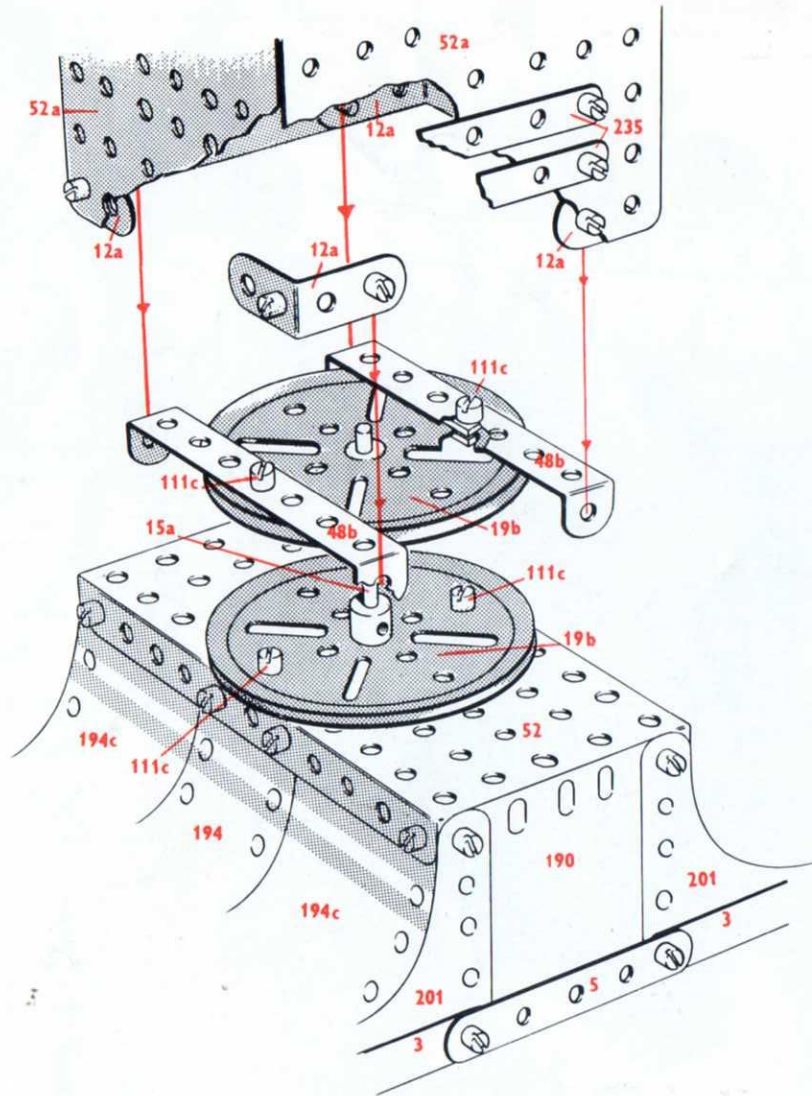
Detail of the right foot

4	- 1	2	- 18a	4	- 52a	1	- 154b
2	- 1b	1	- 18b	3	- 53	4	- 155
24	- 2	2	- 19b	2	- 53a	1	- 160
6	- 2a	4	- 20	10	- 59	1	- 163
6	- 3	4	- 20b	2	- 62	1	- 164
6	- 4	2	- 21	2	- 62b	2	- 165
24	- 5	4	- 22	6	- 63	1	- 185
2	- 6	2	- 22a	2	- 80c	2	- 186
4	- 6a	2	- 24	4	- 90	6	- 188
4	- 7a	2	- 24a	1	- 94	6	- 189
8	- 8	2	- 24c	1	- 95	12	- 190
4	- 9	4	- 26	2	- 96	2	- 191
2	- 9f	2	- 27a	1	- 96a	6	- 192
12	- 10	1	- 28	2	- 108	4	- 194
14	- 12	1	- 32	2	- 109	2	- 194a
5	- 12a	3	- 35	2	- 111	4	- 194c
2	- 12b	337	- 37a	6	- 111a	6	- 197
2	- 13	303	- 37b	4	- 111c	1	- 199
1	- 13a	33	- 38	1	- 116	6	- 200
1	- 14	3	- 45	4	- 125	4	- 201
1	- 15	2	- 48	2	- 126	2	- 212
1	- 15a	4	- 48a	6	- 126a	4	- 214
2	- 15b	2	- 48b	2	- 133a	4	- 215
5	- 16	4	- 48d	2	- 136	4	- 221
3	- 16a	1	- 51	2	- 147b	2	- 235
2	- 17	2	- 52	1	- 154a	1	- M3

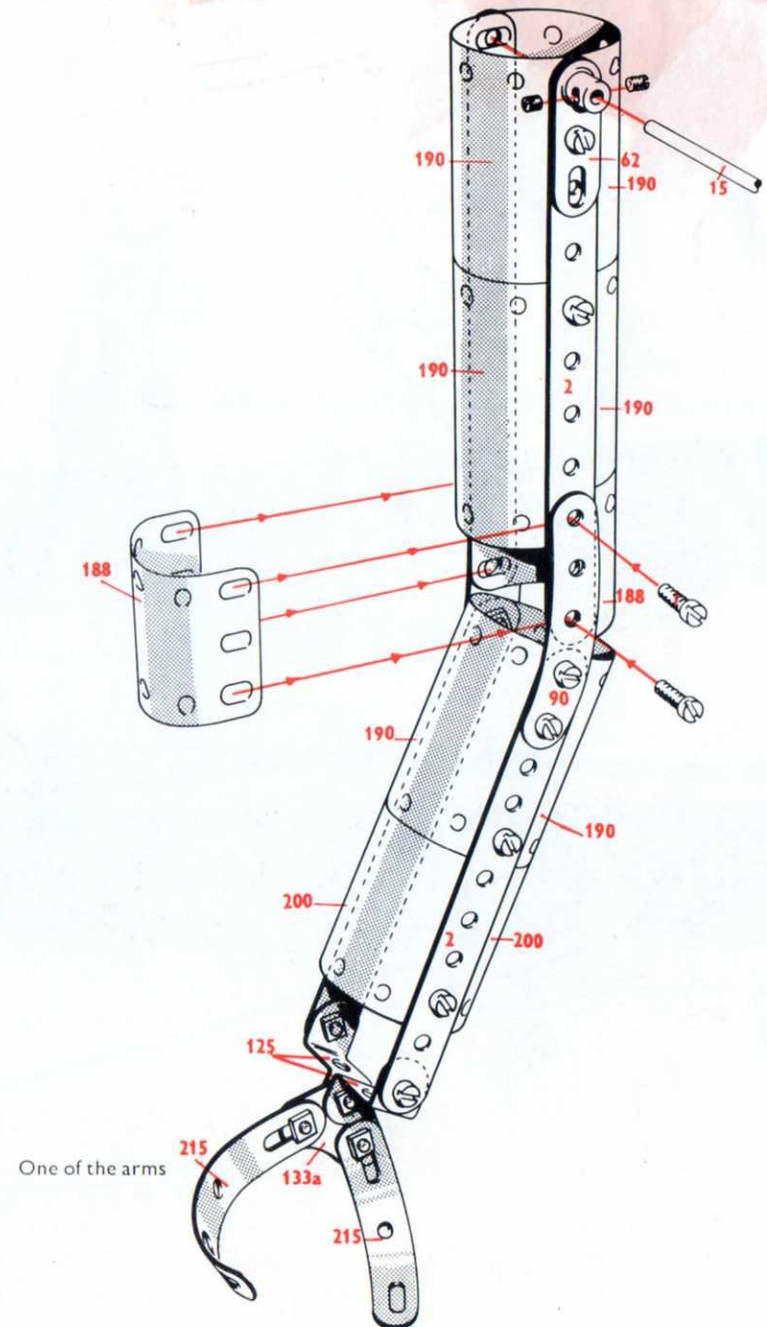
\*Not included in set



Detail of the left foot

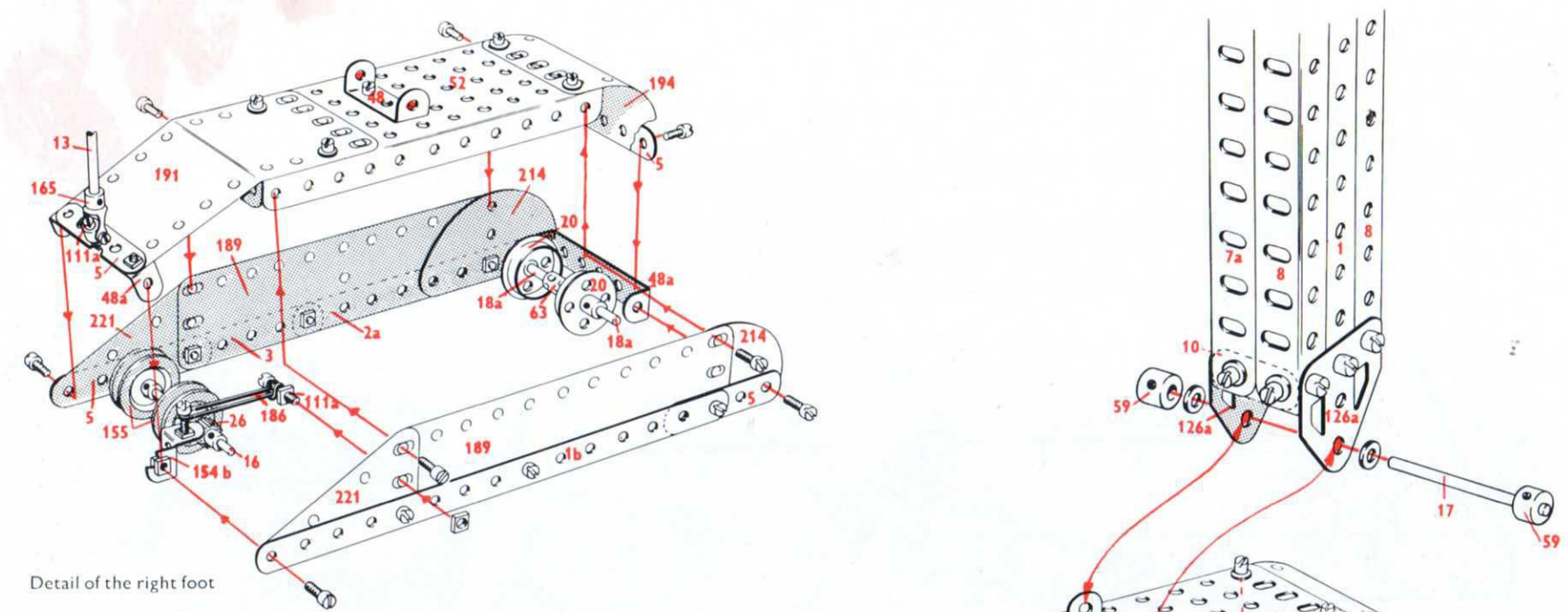


Shoulders of the Robot showing bearing on which the head swivels



One of the arms

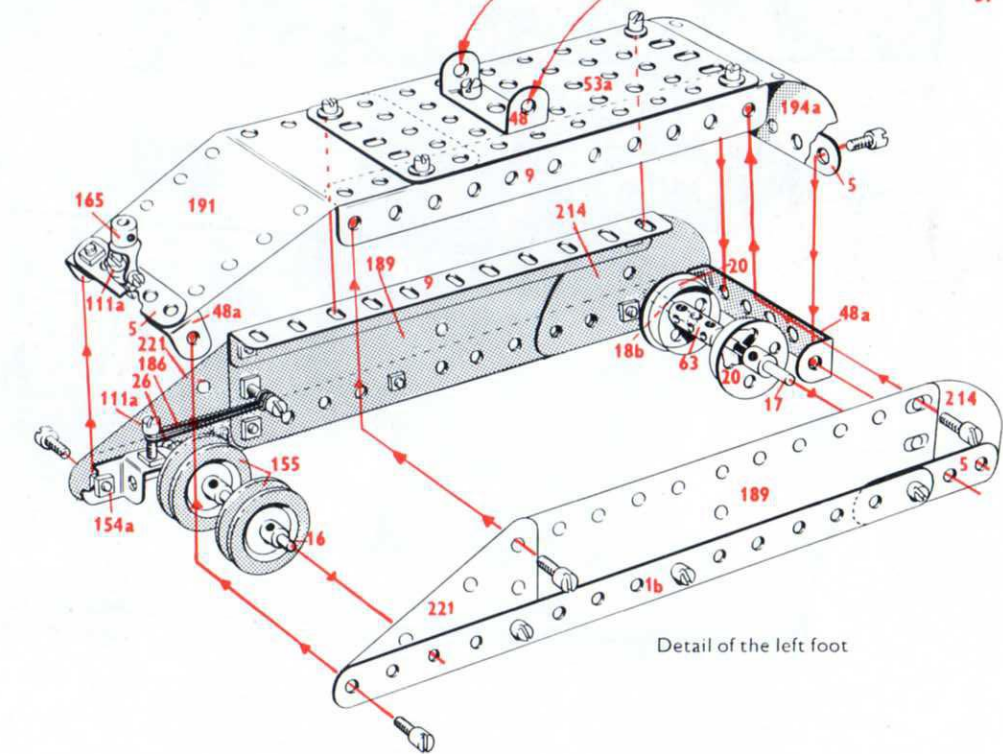




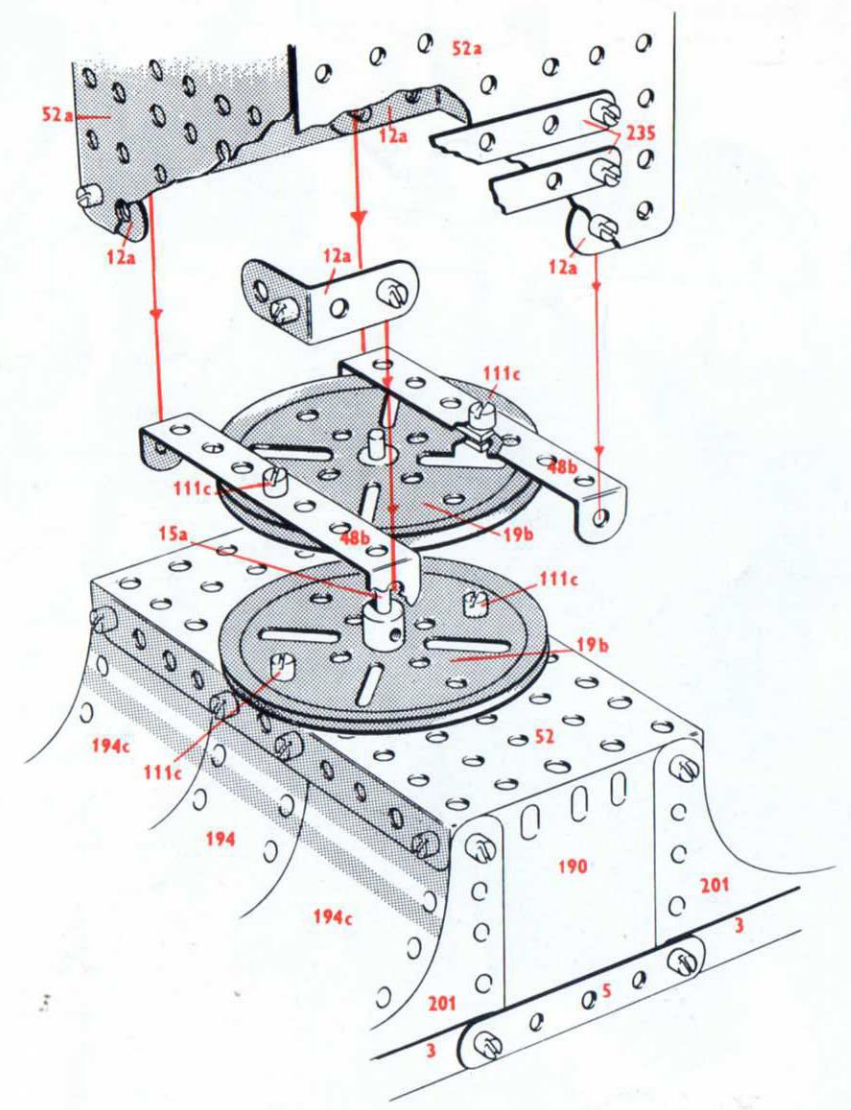
Detail of the right foot

4	1	2	18a	4	52a	1	154b
2	1b	1	18b	3	53	4	155
24	2	2	19b	2	53a	1	160
6	2a	4	20	10	59	1	163
6	3	4	20b	2	62	1	164
6	4	2	21	2	62b	2	165
24	5	4	22	6	63	1	185
2	6	2	22a	2	80c	2	186
4	6a	2	24	4	90	6	188
4	7a	2	24a	1	94	6	189
8	8	2	24c	1	95	12	190
4	9	4	26	2	96	2	191
2	9f	2	27a	1	96a	6	192
12	10	1	28	2	108	4	194
14	12	1	32	2	109	2	194a
5	12a	3	35	2	111	4	194c
2	12b	337	37a	6	111a	6	197
2	13	303	37b	4	111c	1	199
1	13a	33	38	1	116	6	200
1	14	3	45	4	125	4	201
1	15	2	48	2	126	2	212
1	15a	4	48a	6	126a	4	214
2	15b	2	48b	2	133a	4	215
5	16	4	48d	2	136	4	221
3	16a	1	51	2	147b	2	235
2	17	2	52	1	154a	1	M3

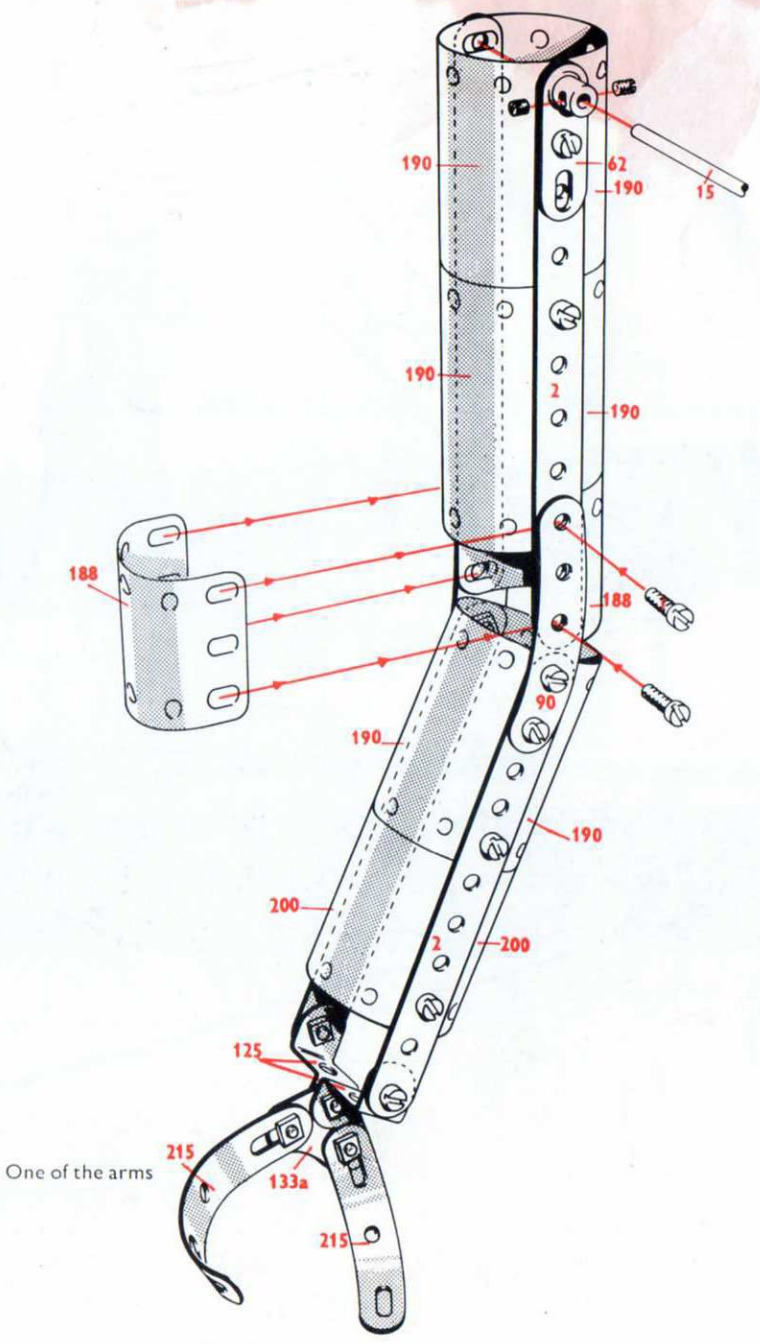
Not included in set



Detail of the left foot



Shoulders of the Robot showing bearing on which the head swivels



One of the arms

# MECCANO. Special Model Leaflet

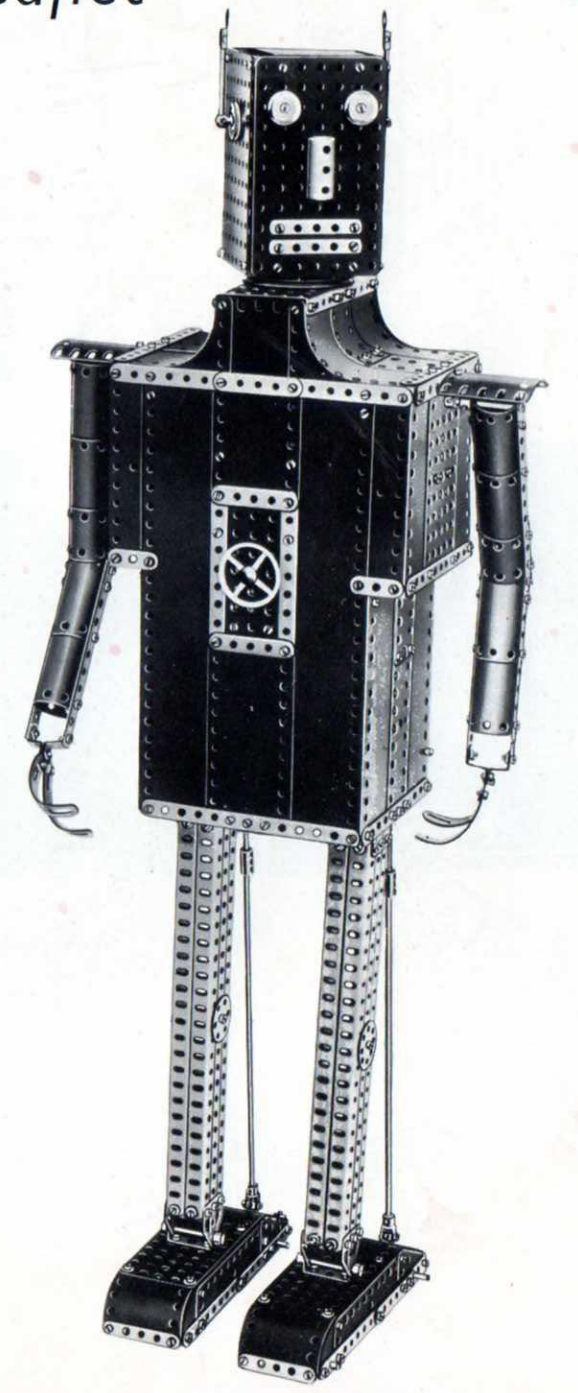
Leaflet No. 27

## 10.27 Robot Man

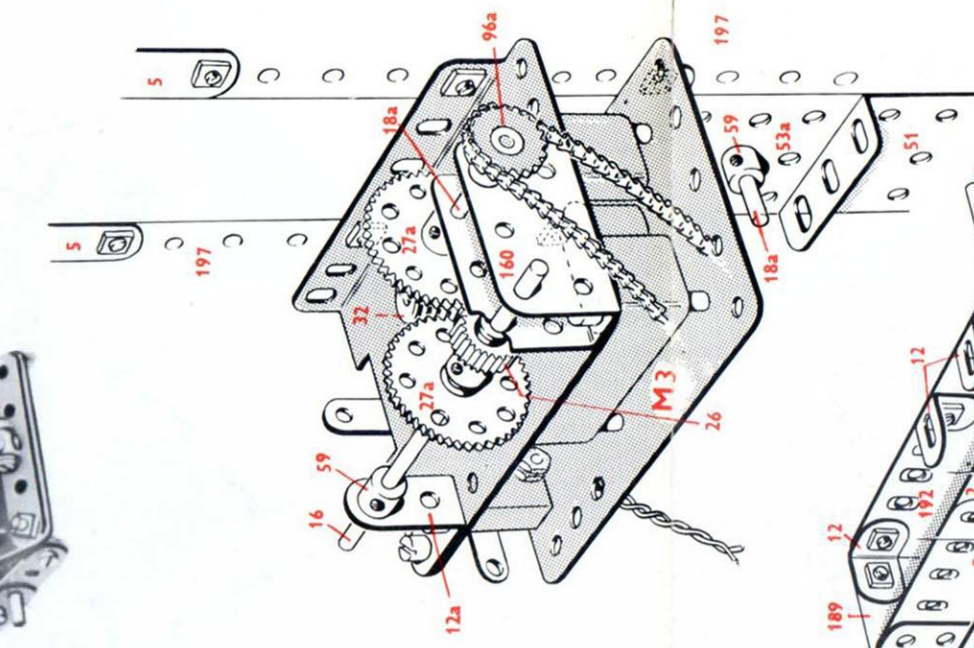
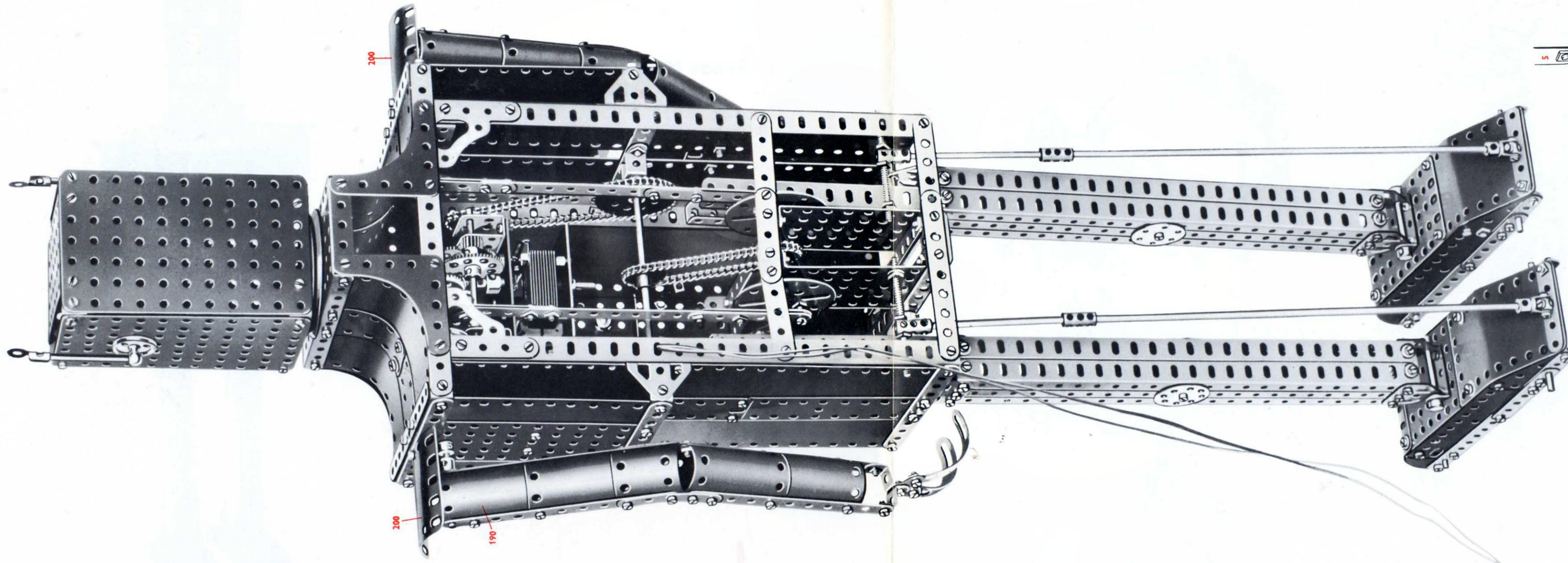
This Meccano model of a Robot or Mechanical Man stands over 3 ft. high. It is powered by a Meccano E15R Electric Motor, which by an ingenious series of linkages, causes the Robot to walk slowly along, swinging his arms and turning his head from side to side. From a mechanical point of view the model is of particular interest in that it provides an excellent illustration of how a single power source can be harnessed by means of gear and chain drives and the use of cranks and levers, to operate no less than five separate but synchronized reciprocal motions.

### How to use this leaflet

The constructional details of the model shown in this Leaflet are explained entirely by means of half-tone illustrations and line drawings. Once the knack of 'reading' the drawings has been acquired assembly of the model will be found quite straightforward and simple to carry out. Before starting to build the model it is advisable to study all the illustrations carefully so as to get a good idea of its various sections. Points at which various units of the model are bolted together to form the complete structure are indicated in the drawings by RED DOTS or RED BOLTHEADS whenever possible. The particular parts used in the assembly of the model can in most cases be identified simply by looking at the illustrations, but where the identity of a part may not be quite clear, its Part Number is printed on the model illustrations in RED. RED DOTTED pointer lines are used to indicate parts that are hidden behind other parts of the structure. As a further help a list of the parts required to build the model is given in this Leaflet. In this list the catalogue numbers of the parts are printed in RED and the quantity of each part in BLACK. In models fitted with a driving Motor the particular type of Motor is indicated by one of the following Code Marks: M1 = Magic Clockwork Motor; M2 = No. 1 Clockwork Motor; M3 = Meccano Electric Motor.







The driving Motor with head and limbs operating mechanism housed in the Robot's body

