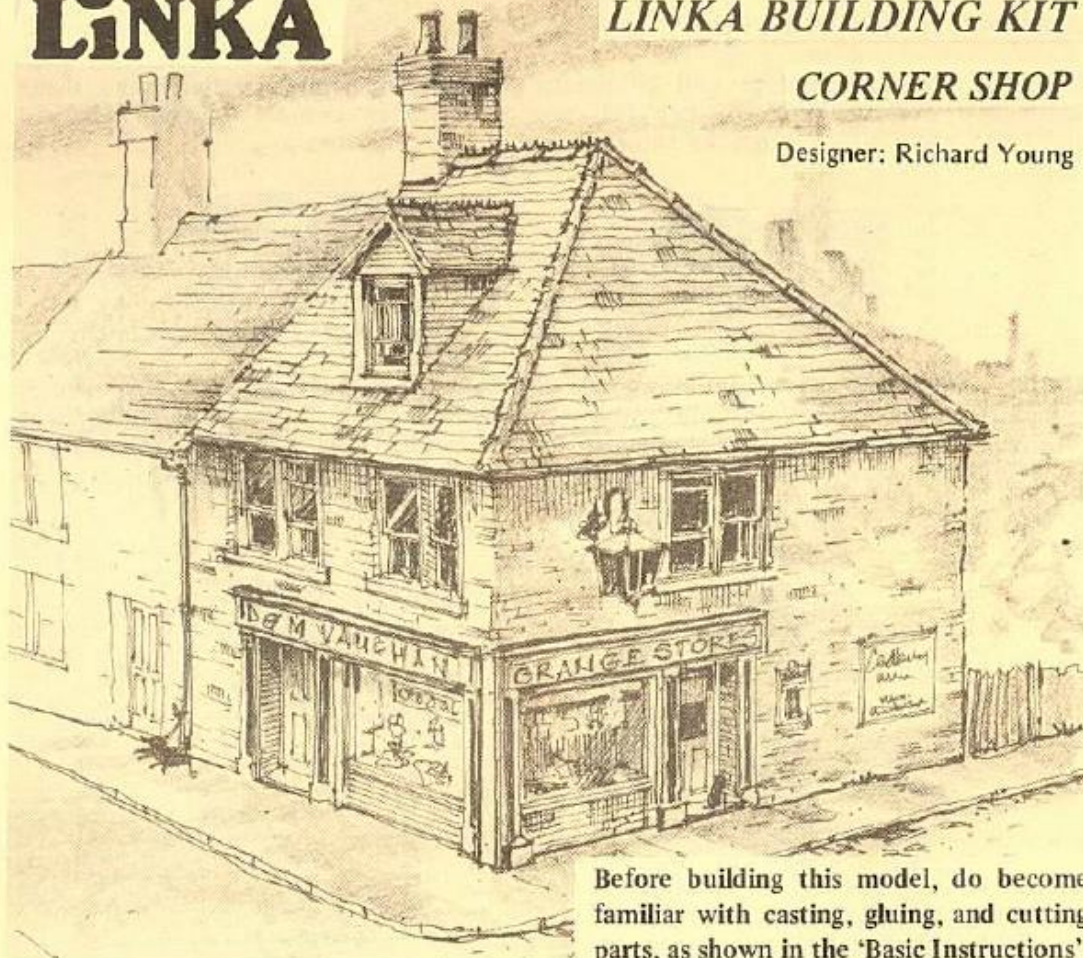


# LINKA

## LINKA BUILDING KIT

### CORNER SHOP

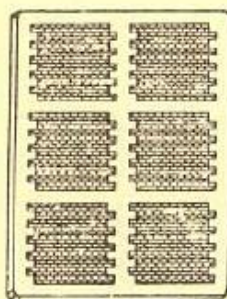
Designer: Richard Young



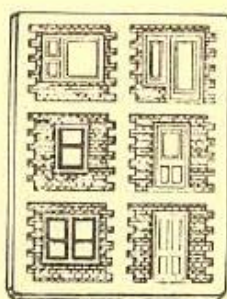
Before building this model, do become familiar with casting, gluing, and cutting parts, as shown in the 'Basic Instructions'.

#### PARTS NEEDED:

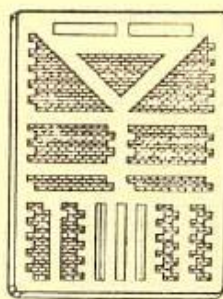
There are four moulds in this kit. Cast each mould as shown below:



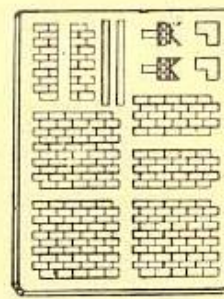
Cast B1 three times



Cast B2 three times



Cast B6 once



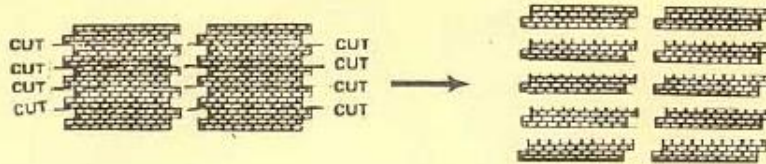
Cast R1 five times

You will now have enough castings (plus extras) to make this model. The extras can be used to replace broken castings - or to help build your own design variations.

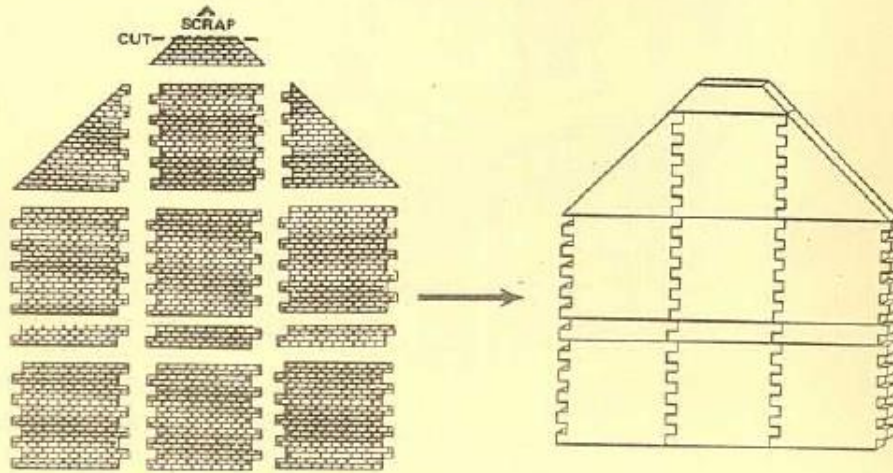


**BUILDING THE MAIN WALLS:**

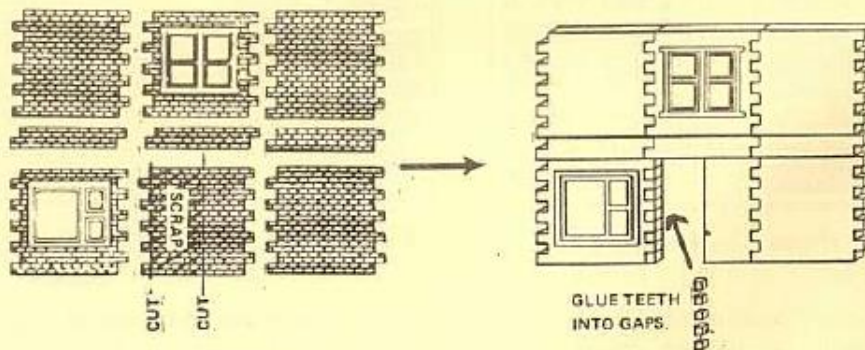
1) Extra two-tier castings will be needed to build the main walls. Make these castings by cutting each of two full panels into five two-tier parts. This will make ten two-tier castings, as shown below.



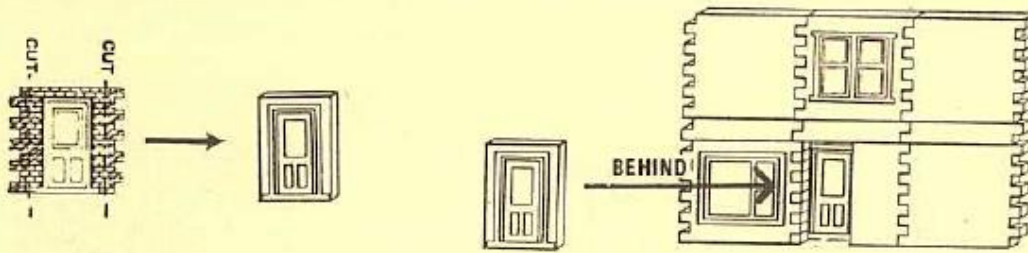
2) Using the castings shown below, glue the back wall together. When the wall is complete, place face down onto a flat working surface, and press all the castings into good alignment before leaving to set. This final lining up of each wall is important, because poor alignment will show up on the finished model.



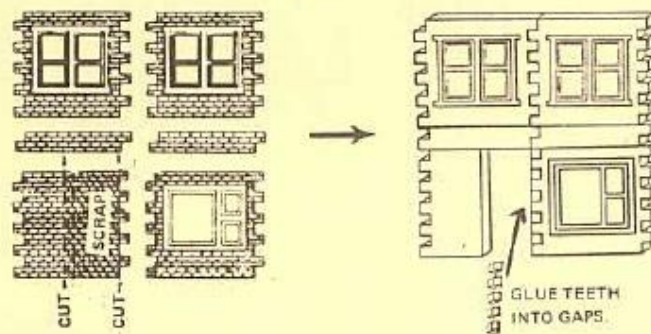
3) Glue the front wall together. Note that the teeth in the lower window casting, beside the doorway gap, need to be filled with spare teeth cut from the scrapped half of the central casting, as shown below. Again, press all the castings into good alignment before leaving to set.



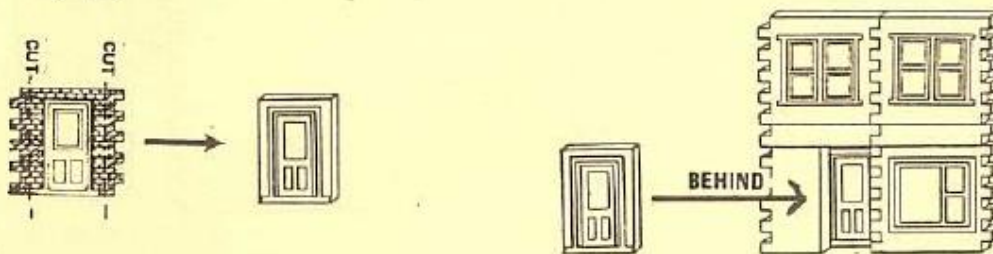
4) Cut the shop door casting as shown below, and glue in place behind the doorway gap.



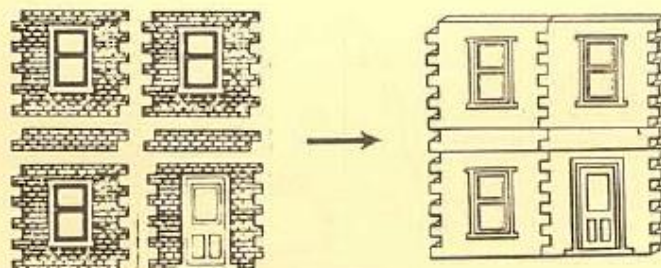
5) Glue the left-hand wall together. Again, glue spare teeth into the lower window casting beside the doorway gap.



6) Cut the shop door casting as shown below, and glue in place behind the doorway gap.

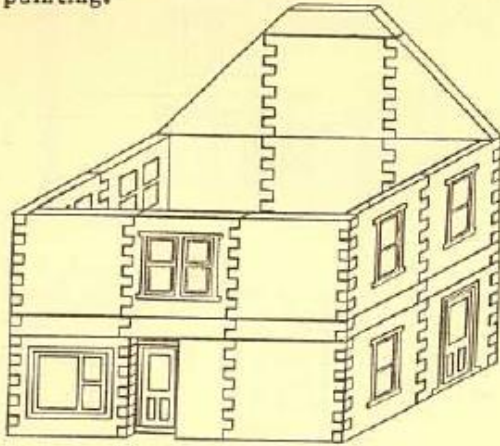


7) Glue the right-hand wall together.

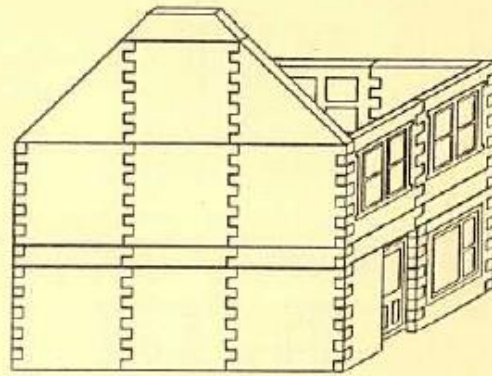




8) When all the walls have set, glue the main building together, gently easing the teeth into position. Don't worry if some teeth break off while you are doing this - they can be glued back in place, and any fractures will disappear after painting.

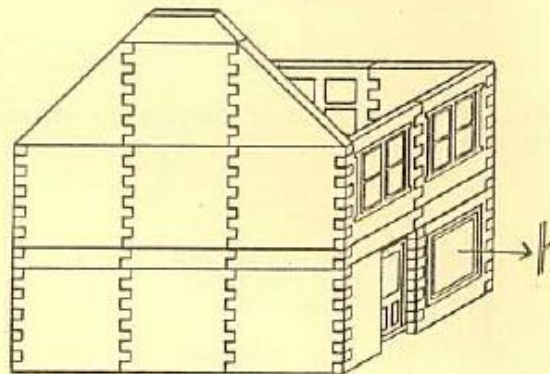
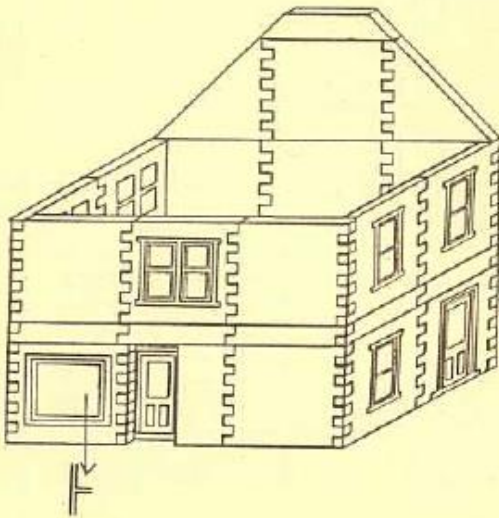


FRONT VIEW

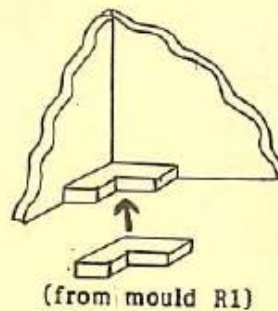


BACK VIEW

9) Remove the frames from the two shop windows, as shown below.

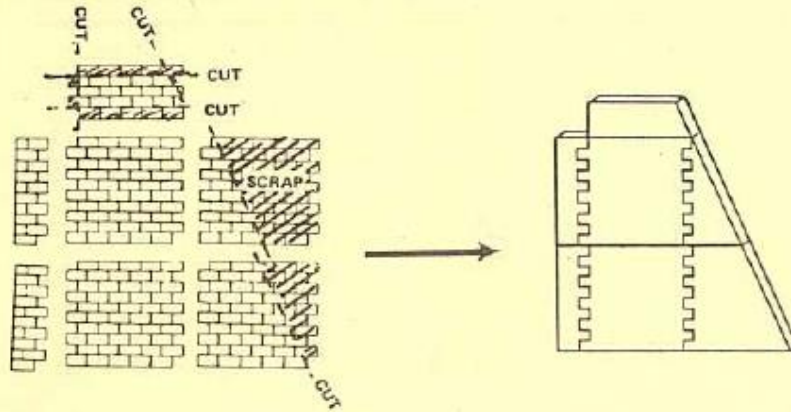


10) Strengthen the model by gluing corner castings inside the base of each corner.

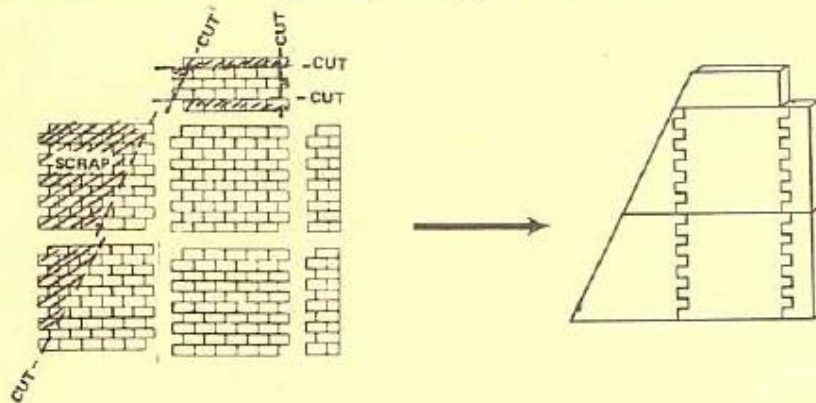


ADDING THE ROOF:

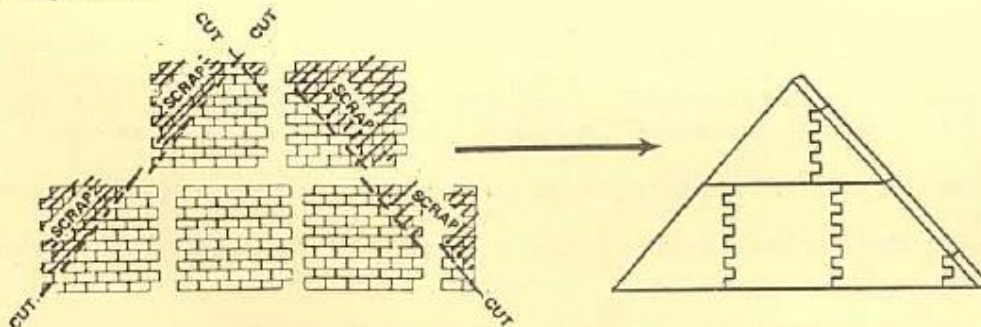
- 1) Glue the left-hand roof together, cutting as shown below.  
(The diagonal cut is best made after the complete left-hand roof has been glued together.)



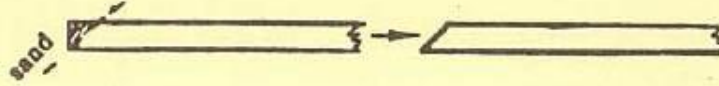
- 2) Glue the right-hand roof together, cutting as shown below.



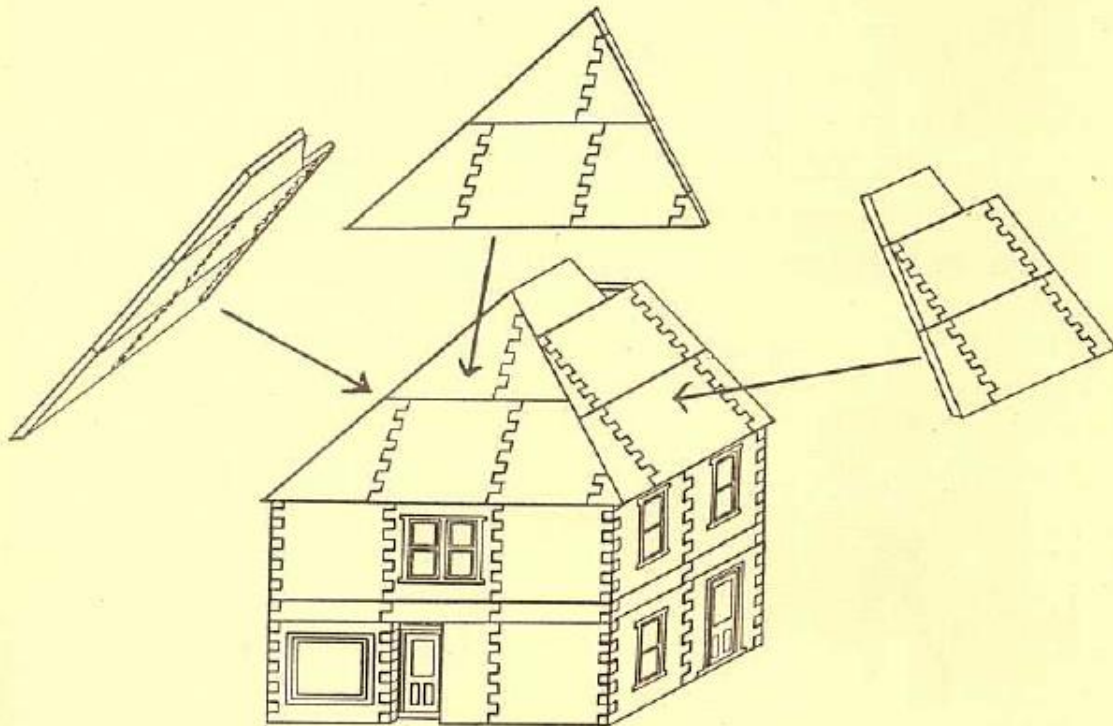
- 3) Glue the front roof together (take care to line up the tiles properly); then cut, as shown below.  
(Again, the diagonal cuts are best made after the complete front roof has been glued together.)



4) The bottom edge of each roof part needs to be chamfered to create the correct angle for gluing on the guttering. Place each roof part face down (smooth side up) on a firm surface and sand the bottom edge to an angle, as shown below.



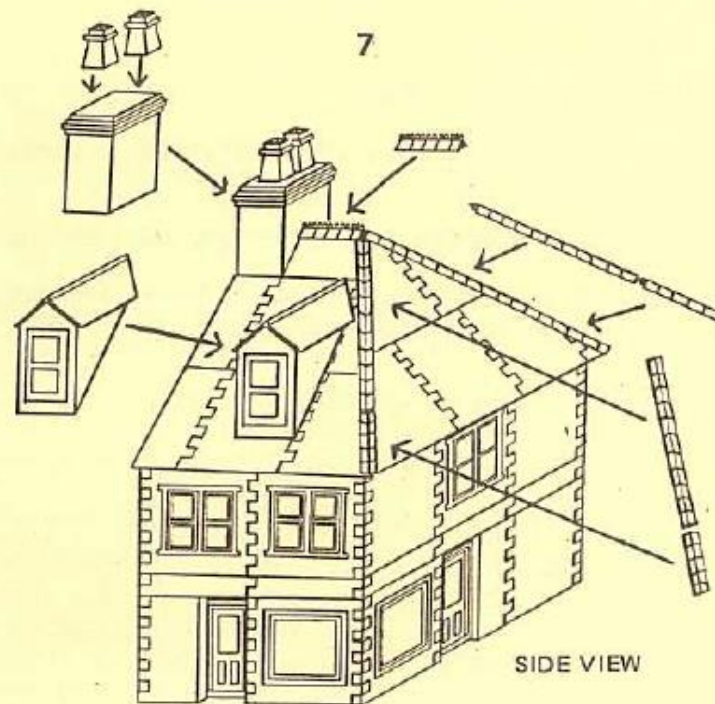
5) Glue the three roof parts into position on the model.



#### ADDING THE ROOF FITTINGS:

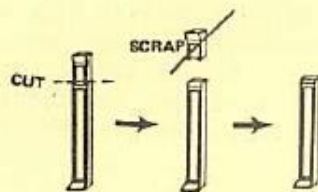
- 1) Glue the supplied chimney stack into position, sanding the roof edges, if needed, to bed the stack well into place. Glue the chimney pots on top.
- 2) Glue the supplied fancy ridging in place on the top apex, cutting as needed.
- 3) Glue the supplied weathered ridging in place on the front angles, cutting as needed.
- 4) Glue the supplied dormer window in place on the left-hand roof.





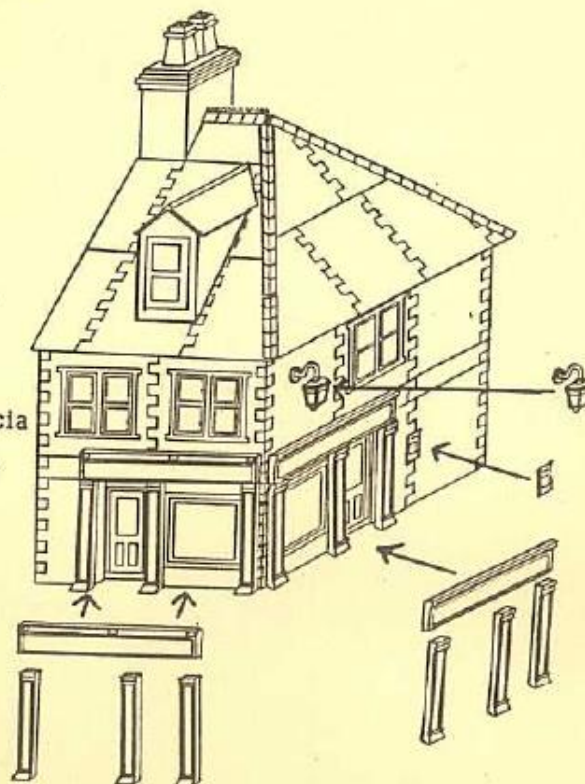
#### ADDING THE SHOP FITTINGS:

1) Prepare the six supplied shop pilasters by cutting off the surplus top section, as shown below. (These pilasters are made of a soft metal - make a nick with a craft knife, then snap off the surplus.)



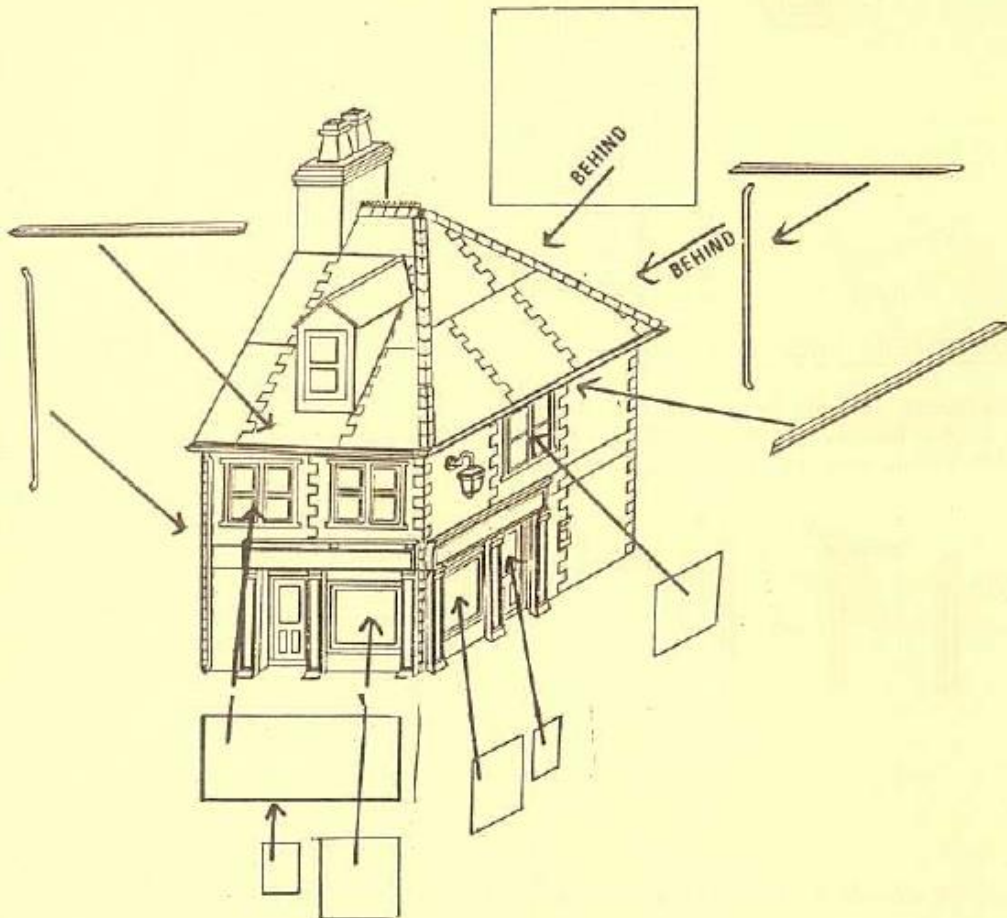
2) Glue the shop pilasters and fascia boards into place, as shown below.

3) Glue the lamp and mail-box into position.



ADDING GUTTERS, DRAINPIPES & WINDOWS:

- 1) Cut the three guttering parts to size from the supplied lengths, and glue into position under the eaves.
- 2) Cut the two drainpipes to length, bend as needed, and glue into position.
- 3) Cut the various window panes from the clear material supplied, and glue into position behind each window, or group of windows.





### PAINING:

The model is now ready for painting. Many model paints can be used for painting Linka models, with pots of enamel or acrylic paints (such as "Humbrol", available from most model and craft stores) being popular. For brick and stonework, etc., use a matt paint; for doors, window frames, gutters, drainpipes, etc., use a gloss paint.

You should find the painting both interesting and straightforward, as the castings take paint well, with the crisp detail helping to guide your brush.

The exact shades and colours to be used are up to you, as brick and slate vary greatly in hue. You may find it helpful to refer to the coloured illustration on the box. A colour guide is also included in this kit.

1) Paint all brickwork with your chosen brick colour, then all roofing with your chosen slate colour.

2) Once this first coat of paint is dry, check the model for any gaps or ill-fitting joints. Fill any gaps by making a very weak mix of Linka moulding compound (about  $\frac{1}{2}$  teaspoon of compound to 3 teaspoons of water), and paint this mix into the gaps with a small paintbrush. An old toothbrush is useful for cleaning off any excess mix, as well as for cleaning out any detail that may have been inadvertently covered. Repaint with brick or slate colour, as needed.

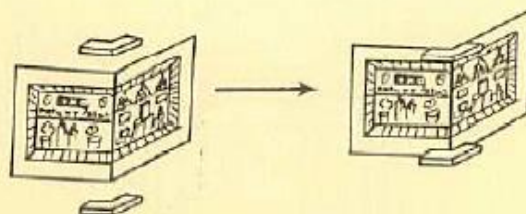
3) Paint the dormer window panes black; when dry, paint the window frames white. Paint the shop doors, fascias, and pilasters a suitable gloss colour. Paint the mail-box red, and the chimney-pots orange.

4) For greater realism, pick out various bricks in different shades of brick colour. Do this by mixing a little palette of brick colour, and then adding small dabs of red or yellow to make a different shade of brick. This can be applied at random to various bricks around the model. Do this two or three times with different shades. Repeat the process with varying shades of slate colour on the roof.

### ADDING THE WINDOW DISPLAYS, SIGNS, & POSTERS:

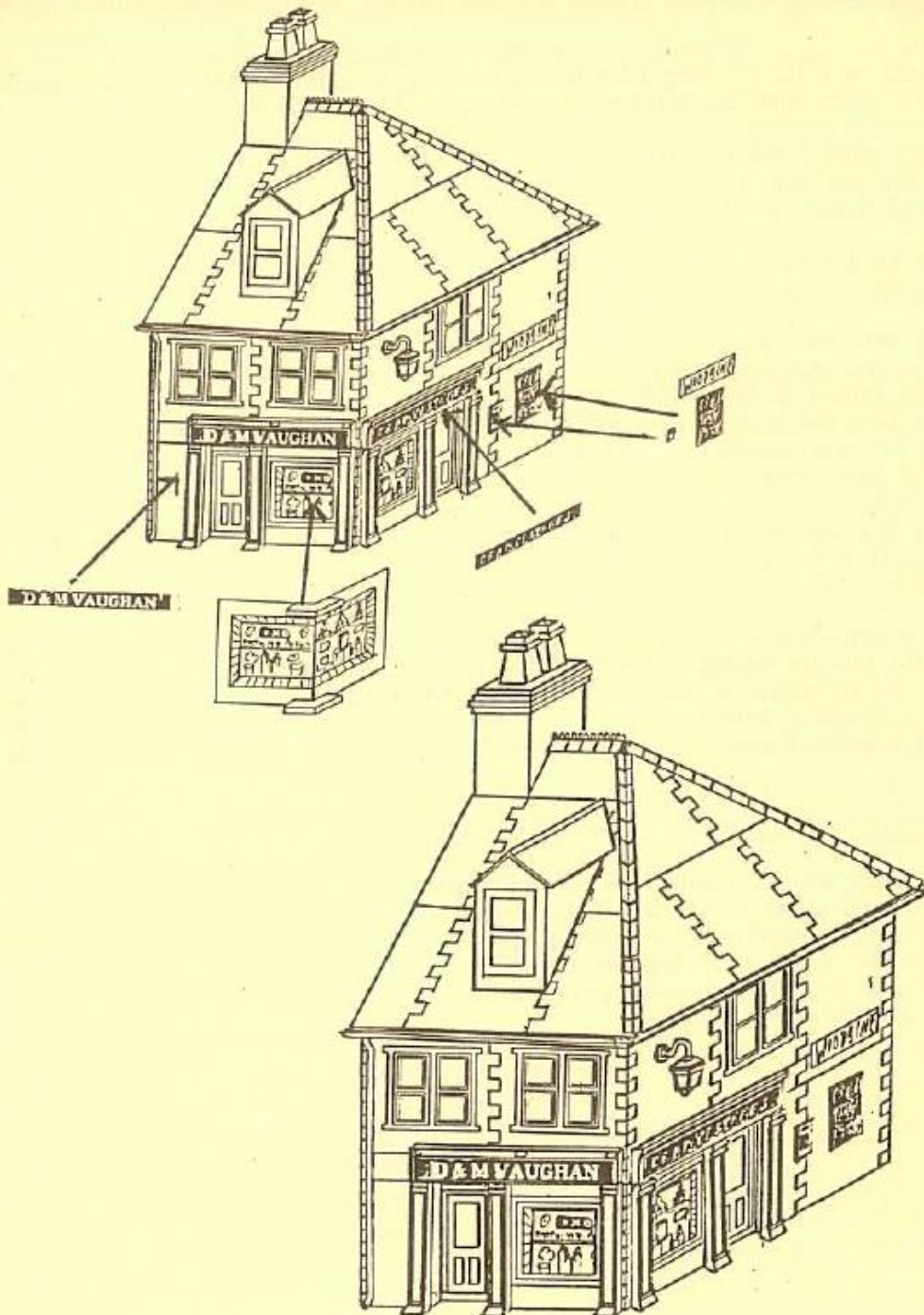
1) A printed window display card is included. Colour this display card with felt pens, and fold along the dotted line. Glue the two corner pieces illustrated (from mould R1) into position on the card's front corner, as shown below.

(An alternative idea: use instead a suitable picture cut from a colour magazine or catalogue and reinforced by gluing onto a piece of card. It can be fun trying to find appropriate pictures.)



2) Position the display card behind the shop windows; then glue the edges against the recessed shop doors, so that the display is set back behind the windows.

3) Cut out and glue the shop signs in place on the fascias. Choose any posters you want to add, and glue in place. Cut out and glue the mail-box sign in place.



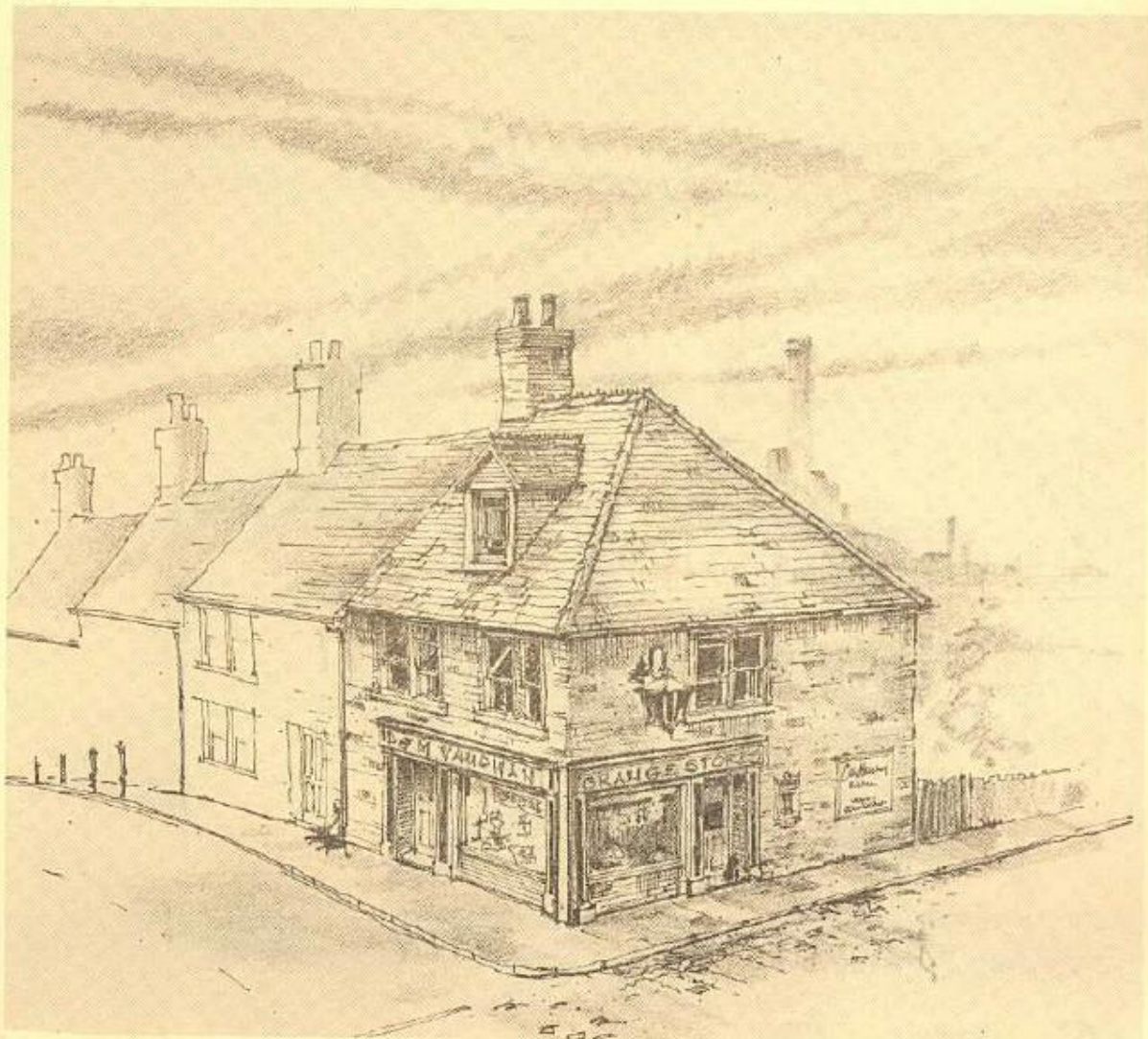


FINISHING:

To finish and weather the model, switch to watercolour paint in either powder, tube, or block form. With a well-diluted mix of grey watercolour, paint the entire brickwork area; when dry, some of the paint will have collected in the mortar runs to represent cement. If it has 'greyed' the stonework too much, sponge off the excess. Repeat the process with a black wash for the roof. Add more watercolour for heavier weathering effects, or wash off and re-apply for any change of effect.

ADDING A TERRACE OF HOUSES TO THE CORNER SHOP:

Using the moulds you already have in this kit, a full street scene can be added. Either design your own brick terrace, using the experience you have gained while building this model, or send off for a special pack with instruction book and parts (see enclosed spares order form) for building brick terraces.







*A terrace of houses ..... shops and flats ..... just some of the many models possible using the moulds in this kit.*

