

ERECTOR
SKYSCRAPER SET
U.S.A.

TYPE	Architectural System		
HOLE DIAMETER	Not applicable	HOLE SPACING	N.A. (The standard parts were as Meccano)
SETS IN SYSTEM	Total of I: Erector Skyscraper Set		
DIFFERENT PARTS	7 Special parts designed for this Set - other parts I77 standard parts		
COLOUR	Black and white		
FIXING METHOD	Split Rivets also standard Nuts and bolts - 8-32		
MOTORS	None in Skyscraper Set		
PERIOD	I935 to I936		
MANUFACTURER	The A.C.Gilbert Co., New Haven, Connecticut,U.S.A.		
COMMENTS	This was another special ERECTOR Set designed for architectural models. The special parts in the Set (7 in total) were cardboard panels which were printed on both sides. The split-rivet was used to fix these parts.		

MATERIAL SUPPLIED BY Clyde.T.Suttle.

GILBERT
ERECTOR
SKYSCRAPER
 Architectural SET Construction

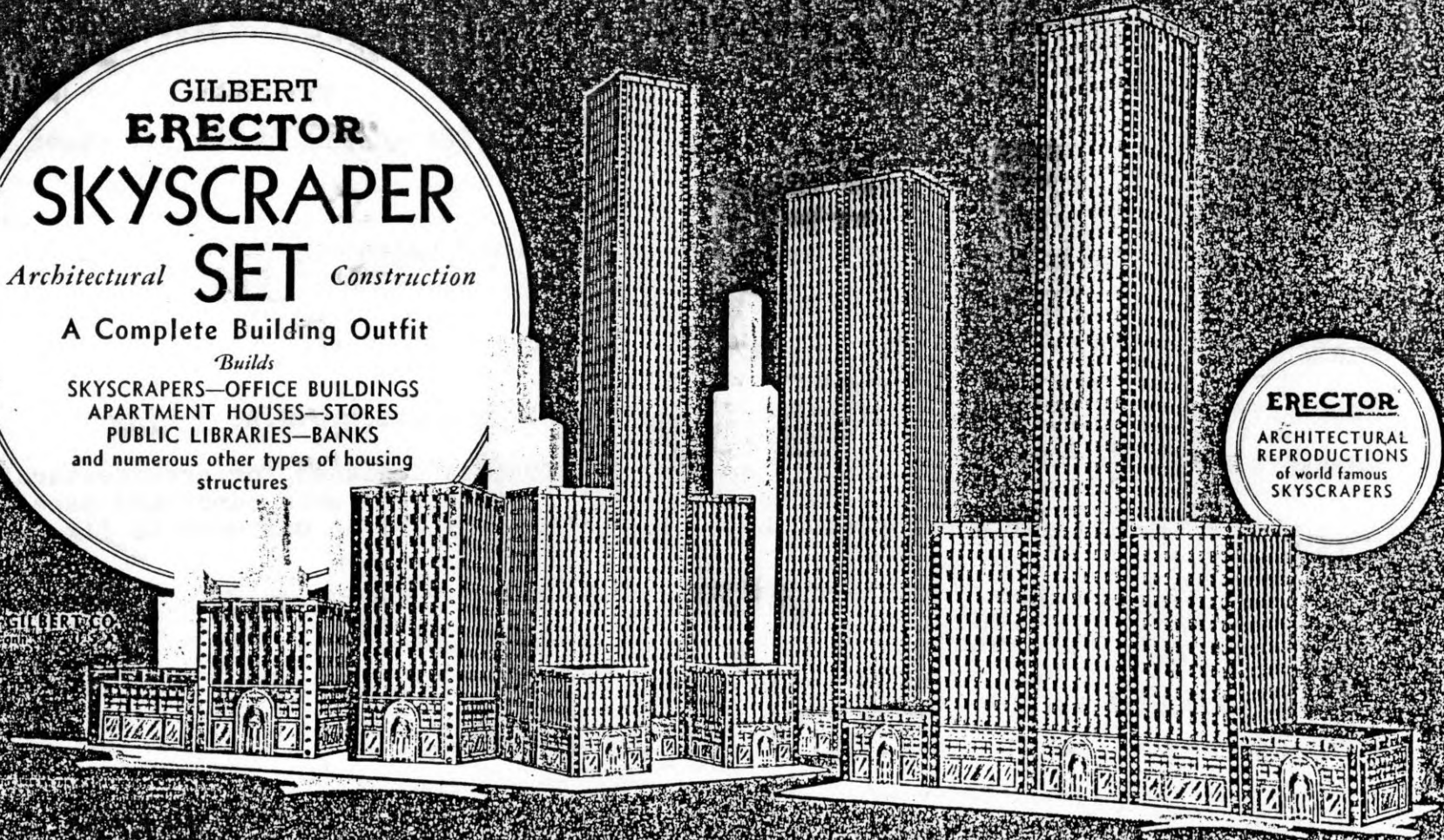
A Complete Building Outfit

Builds

SKYSCRAPERS—OFFICE BUILDINGS
 APARTMENT HOUSES—STORES
 PUBLIC LIBRARIES—BANKS
 and numerous other types of housing
 structures

ERECTOR
 ARCHITECTURAL
 REPRODUCTIONS
 of world famous
 SKYSCRAPERS

THE W. A. GILBERT CO.
 Waukegan, Ill.

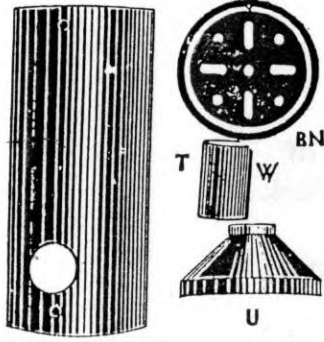


NOTE: This page of parts is the last one of three pages, the first two contain standard parts. This shows the 7 extra parts NA.NB.NC.ND.NE.NF.NG.

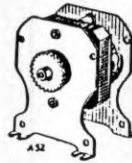
ERECTOR SEPARATE PARTS MOTORS AND HOISTING UNITS

3

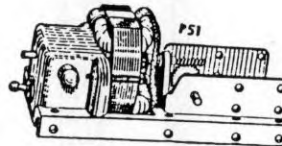
BOILERS AND ACCESSORIES



P56G



A52



P51



P54



P58

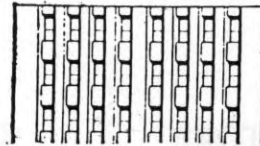


P59

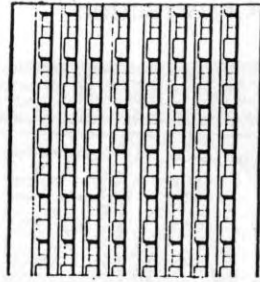
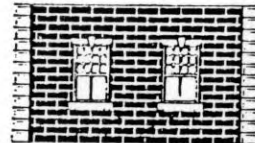
SCOOP



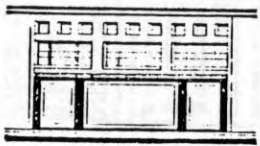
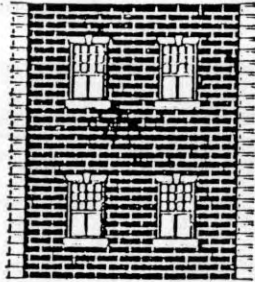
X



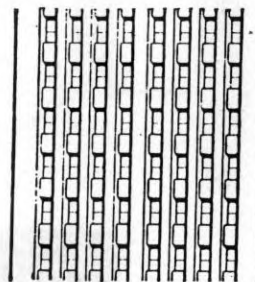
NC



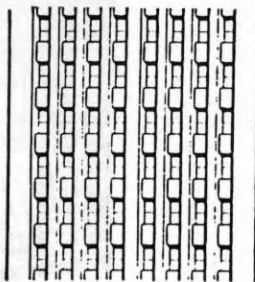
ND



NB



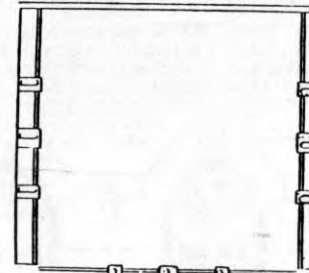
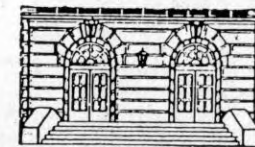
NE



NF



NA

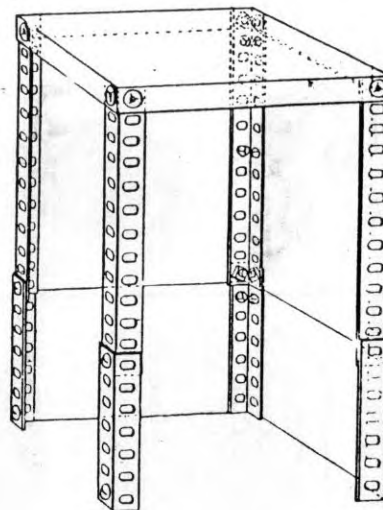
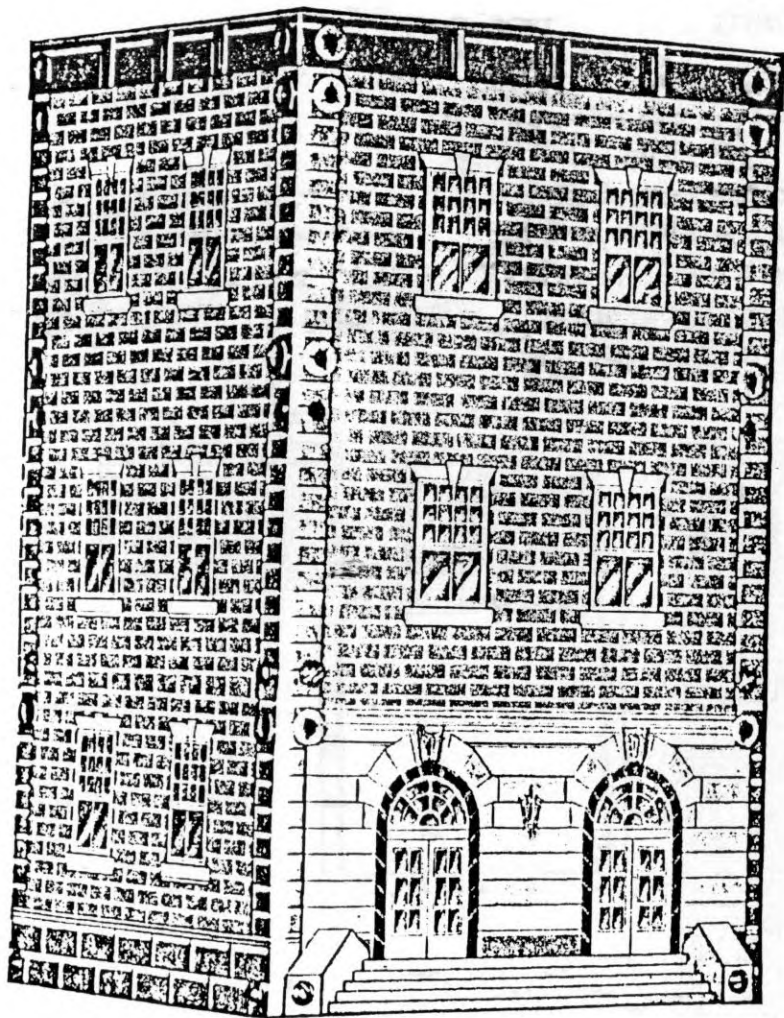


NG

Models constructed with Erector Building Sections

3 STORY APARTMENT HOUSE

Brick Construction



Construction of
Steel Frame Work
of 3 Story
Apartment House

STORE
Cement Construction

