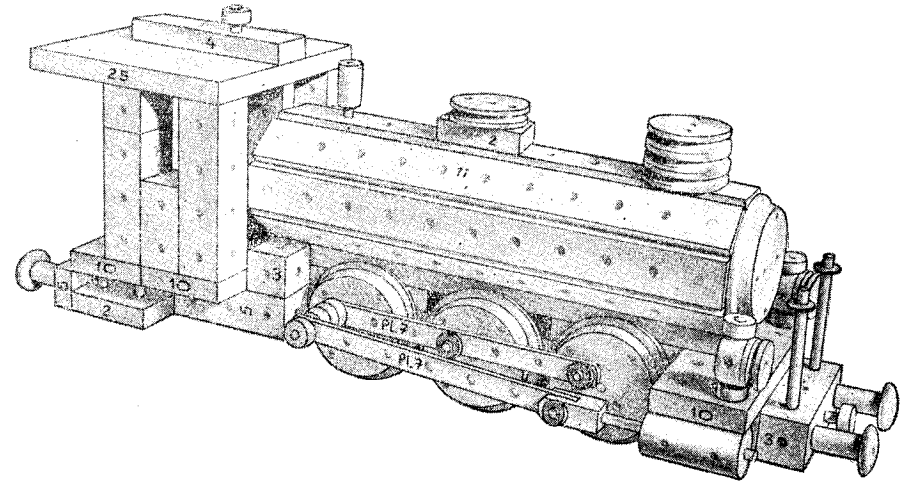


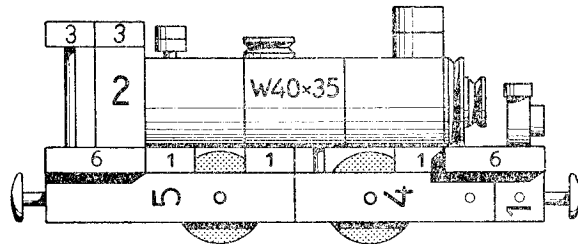
55/6 Lokomotive
gebaut aus Matador Nr. 4

- Zusätzlich verwendet:
- 7 Spurräder 3
 - 2 Lok-Naben 8
 - 8 Streben 11
 - 4 Pleuelstangen 7
 - 2 Gelenke 2
 - 2 Walzen 20 x 40 mm
 - 4 Pufferteller

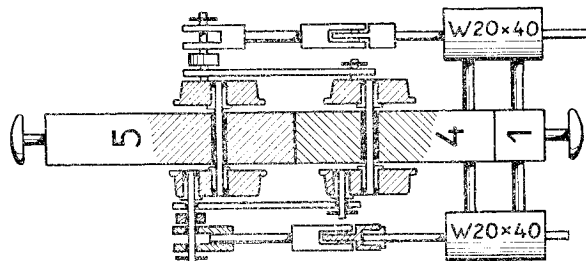


55/5 Lokomotive gebaut aus Matador Nr. 1

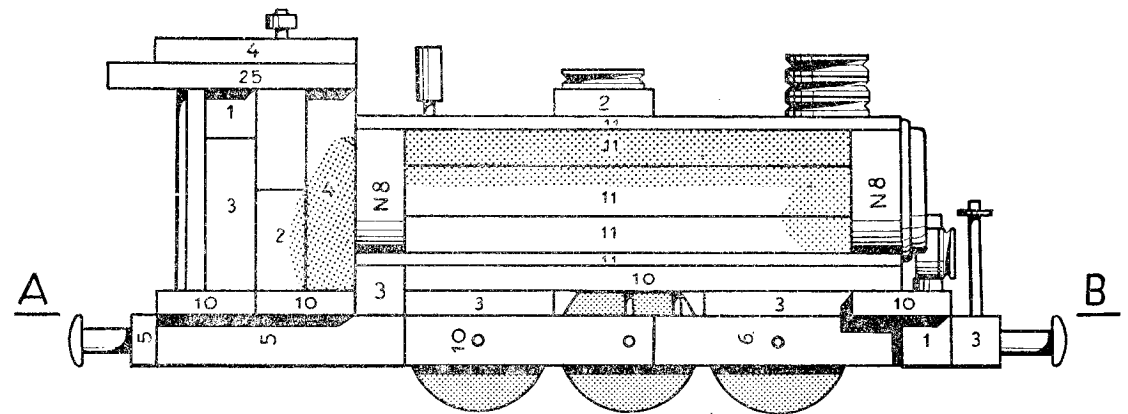
- Zusätzlich verwendet:
- 2 Gelenke G 2
 - 4 Spurräder 2
 - 3 Walzen 35 x 40 mm
 - 2 Walzen 20 x 40 mm
 - 2 Kreuzköpfe
 - 2 Pleuelstangen 4 Loch
 - 2 Pufferteller
 - 2 Platten 6
 - 3 Brettchen 1
 - 2 4-Loch-Naben



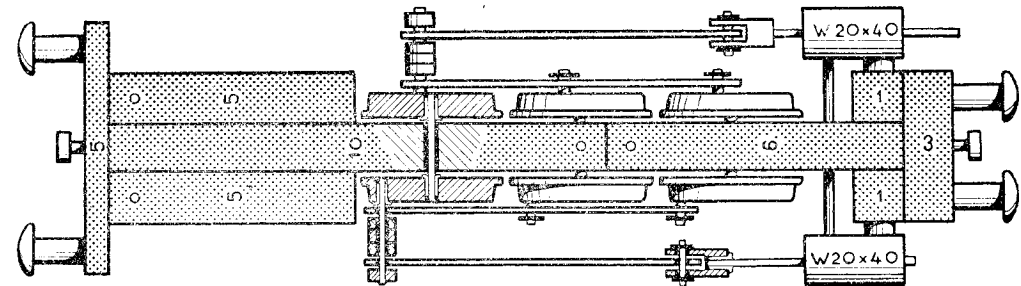
Längsschnitt



Horizontalschnitt



Längsschnitt



A-B
Horizontalschnitt