

Ing. KORBULY

MATADOR



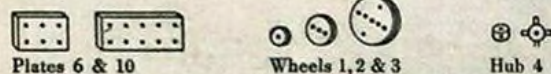
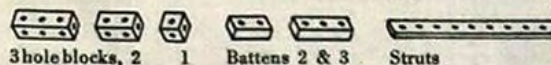
EA

Lechner

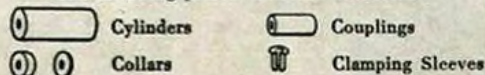
2

Building with Matador

Each part has a name:



The following pieces are more numerous:



Couplings are used for joining two rods.

Collars. The green are for shafts; the blue to put on the connecting rods.

Connecting Rods are grooved.

Shafts are thin blue rods without any grooves. They can rotate in the holes. They serve as axles and shafts for vessels and engines.

Clamping Sleeves are for seating axles and shafts.

How are axles fixed to the component parts?

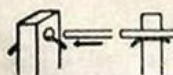


1. The places where the axles are to rest are marked by small circles.

2. The clamping sleeves serve for the fixing of the axles. They are put into the bore and then the axle is inserted.



The same purpose can be obtained by inserting a piece of string in the bore before inserting the axle.



If the component part is to be fixed at the end of the rod a piece of string across the bore will serve the same purpose as a clamping sleeve. The string is pulled in with the axle.

How to fasten the thin string which will transmit power

Place the string over the pulley wheels. A knot is made on one of



the wheels. Dampen the string where the knot is to be made. This prevents it stretching. Care must be taken to make a flat, even knot as shown in the Diagram.

For what is the Matador tool used?

It is used to pull rods out of the holes in the blocks, also to thin down hard-wood rods and shafts that are too thick.



To remove rods from blocks, place hole (A) over the rod, taking care to leave a space between the block and the tool so as not to damage the wood.

Press the tool firmly towards the block, squeezing the rod into the hole, then a straight pull will extract the rod.

How to make rods thick that have become too thin

Lay them between sheets of damp newspaper. They will swell and after leaving them to dry out on a piece of dry paper for a day (away from any heat) they will be ready for use.

What to do when the hardwood axles are too thick?

Put them on a smooth surface such as a table or a ten-hole plate, press the axle with a block rolling it forward and backwards at the same time. It will soon thin out where it has been pressed with the block.



Also the Matador-tool is used for the thinning of axles. These are pulled or pushed through the holes of the tool marked with the figures 4.3 and 4.2 (hole 4.5 serves for connecting rods).

How to slim rods that are too thick

In damp weather rods have been known to swell and to become too thick. Warm them for a few minutes and they will shrink. Take care not to overheat

How models can be taken to pieces

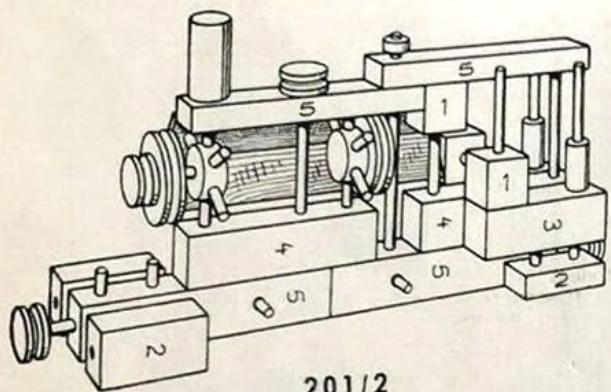
To remove the wooden rods from the holes in the blocks, use the dome-topped metal tool. The best method is to place the model on two blocks and with the metal tool push the wooden rod down gently from above. Be careful not to damage the wooden pieces when taking models apart.



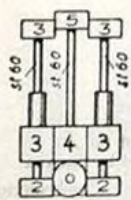
MATADOR remains always as good as new, if additional connecting rods and axles are bought.

The St 1 and St 3 sets contain connecting rods and collars.

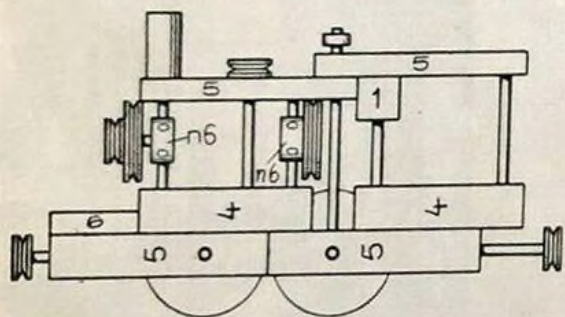
The HA 1 set contains all hardwood axles, clamping sleeves and collars.



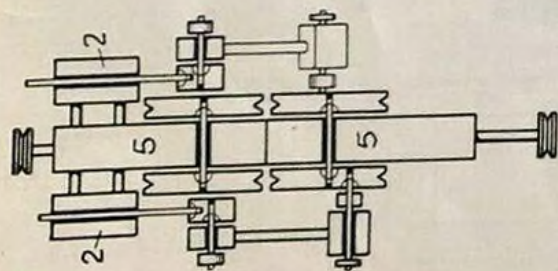
201/2



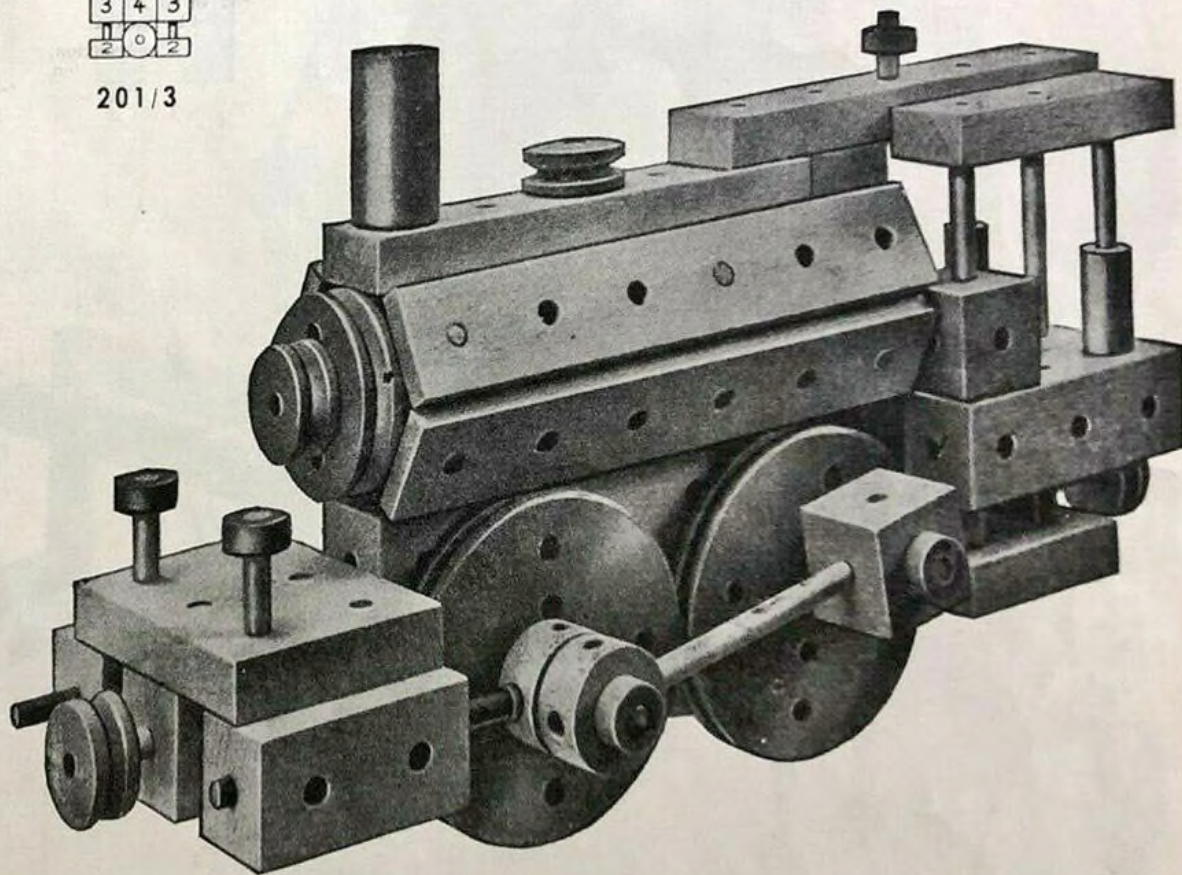
201/3



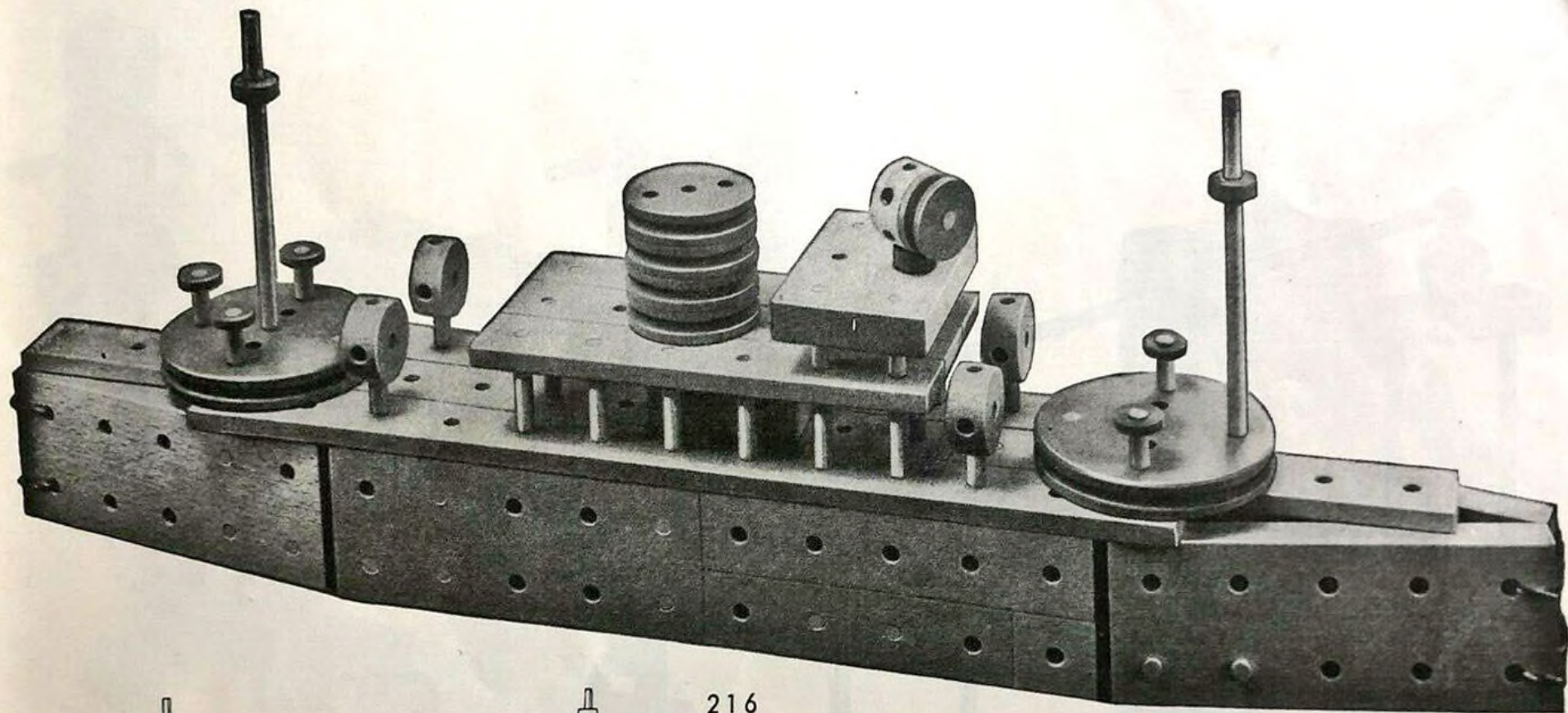
201/4.



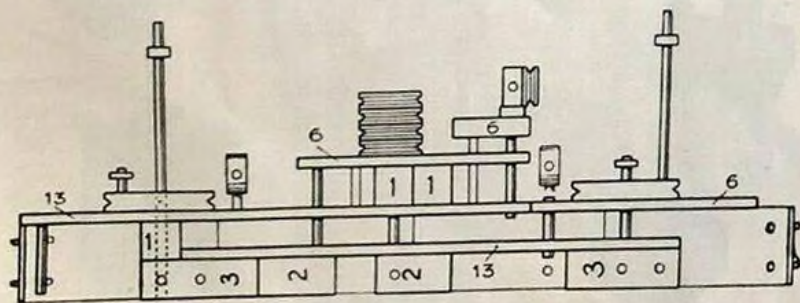
201/5



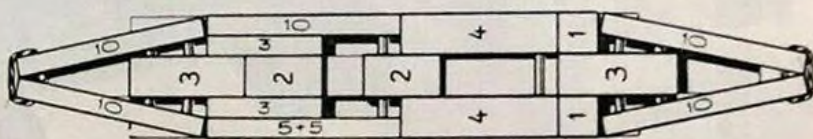
201



216



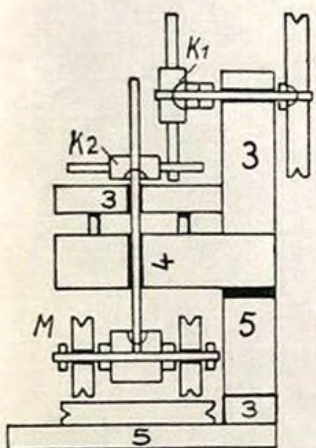
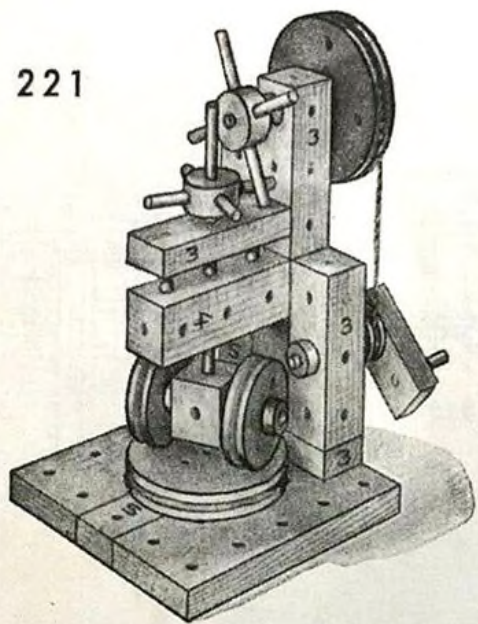
216/2



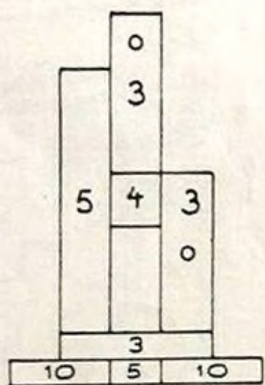
216/3

MATADOR 2

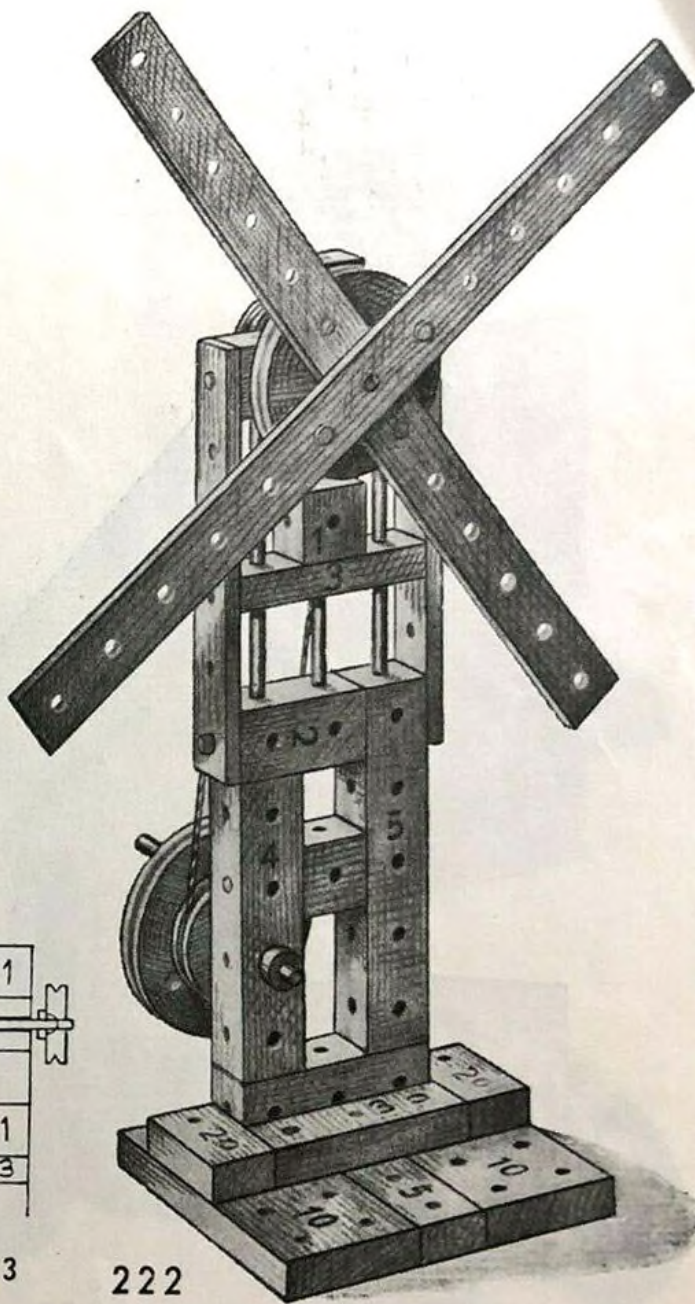
221



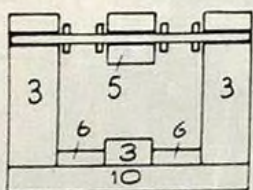
221/2



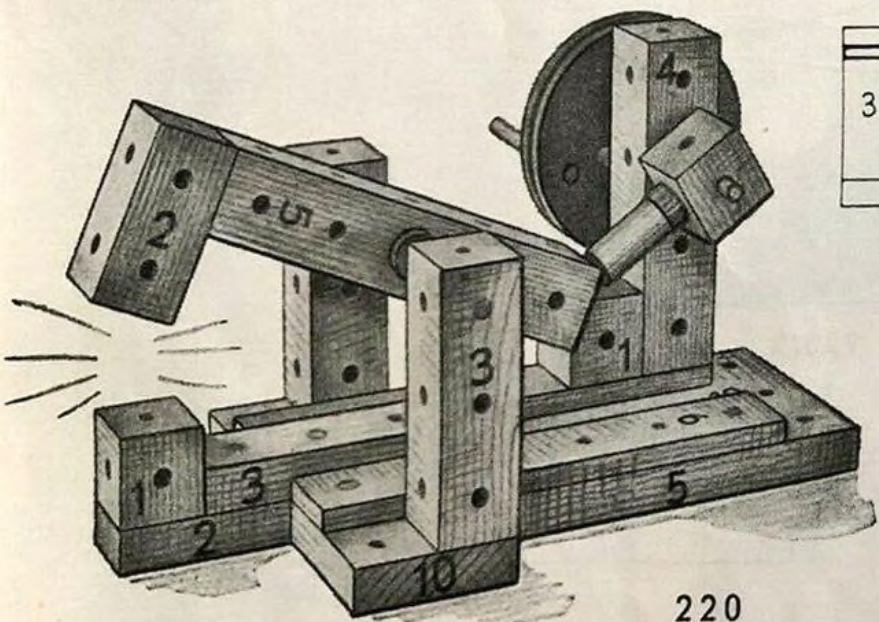
221/3



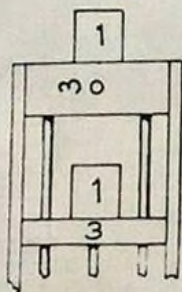
222



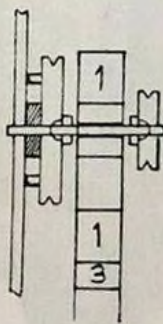
220/2



220



222/2



222/3